












# AVM4177P

## 17" Widescreen HD Display



### FEATURES ///

-  17.3" 16:9 ASPECT RATIO DISPLAY
-  1920 X 1080 RESOLUTION
-  I/O HD / SD / DVI / VGA INPUTS & 1 HD / 2 SD OUTPUTS
-  SS, PIP, AND SBS MODES
-  PASSIVE COOLING
-  THIN PROFILE
-  NVIS COMPATIBILITY (OPTIONAL)
-  TOUCHSCREEN (OPTIONAL)
-  HEATED LCD (OPTIONAL)
-  REMOTE DIMMING (OPTIONAL)
-  RUGGED MILLED ALUMINUM FRAME



### WHEN BIGGER IS BETTER ///

For crisp display of video, DVI, and VGA, look no further than the AVM4177P, a widescreen display that offers extensive interconnectivity with cockpit sensors, map systems, and mission computers. Split-screen, picture-in-picture, and side-by-side screen modes allow sensor imagery, maps, or video to be viewed simultaneously.

The sunlight-readable 16:9 LCD offers a broad dimming range and optional NVIS compatibility. The slim milled display frame maximizes viewing area while retaining rugged performance. The fanless-cooled design minimizes display width and simplifies integration.

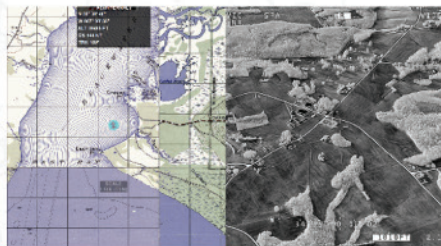
The AVM4177P is an all-around workhorse and an excellent choice to support airborne and ground ISR missions.

**AVALEX**  
TECHNOLOGIES

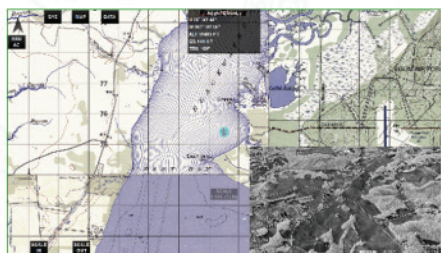
avalex.com



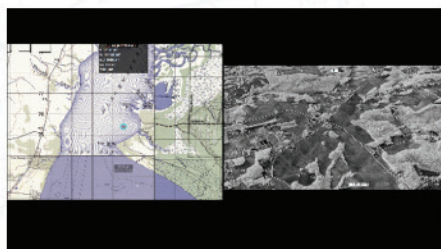
The AVM4177P offers four screen modes: full screen, split screen (SS), picture-in-picture (PIP), and picture-by-picture (PBP), also known as side-by-side. Full screen displays only one input signal and maintains the aspect ratio of the input source.



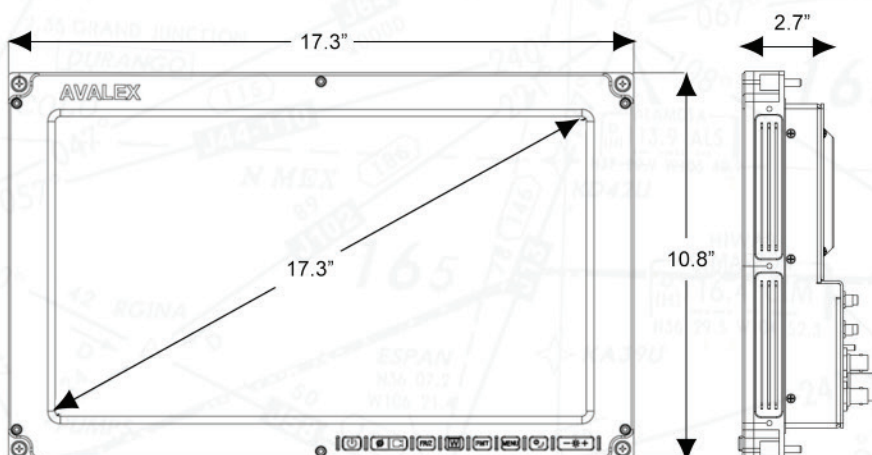
Split screen displays two input signals simultaneously; these images are positioned next to each other and stretched vertically to fit the screen.



Picture-in-picture also displays two inputs simultaneously, one in a large format and one in a smaller window whose position is configurable via the display setup menus.



Like split screen, picture-by-picture or side-by-side displays two inputs next to each other; these images, however, retain the aspect ratios of their respective video inputs. Excess screen space appears as black bars.



## SPECIFICATIONS

### DIMENSIONS //

Display Area	17.3" diagonal	439.42 mm
Height	10.8"	276.23 mm
Width	17.3"	439.42 mm
Depth	2.7"	68.58 mm
Weight	11 lbs	4.9 kg

### I/O //

Power	28 VDC
Composite Video	6 inputs / 2 outputs
HD Video	2 inputs / 1 output
VGA	2 inputs
DVI	1 input / output
Signals	NTSC, PAL, SMPTE292M, VGA

### CHARACTERISTICS //

Power Draw	1.8A at 28 VDC (50.4w); 4.8A at 28 VDC (134.4w) with heater
Aspect Ratio	16:9
Resolution	1,920 (h) x 1080 (v) pixels
Horiz. Viewing Angle	160°
Vert. Viewing Angle	140°
Contrast Ratio	600:1
NVIS	Class B (optional)
Operating Temp	-45 to +71 °C (with heater)

### QUALIFICATIONS //

MIL-STD-810G	MIL-STD-461F
--------------	--------------

### VARIANTS //

AVM4177PN	NVIS-compatible
AVM4177PH	Heater
AVM4177PT	Touchscreen
AVM4177PE	Black rear housing
AVM4177PR	Remote dimming