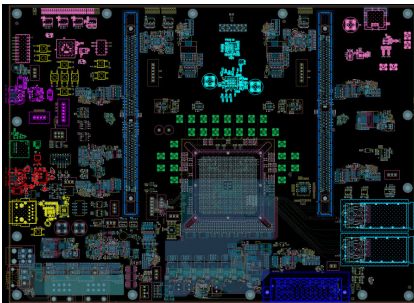


EB-RFS1140

Evaluation board for RFS1140 System-in-Package (SiP)

Test and evaluate the analog signal chain on the RFS1140 SiP

- Evaluate RF digitization and signal generation
- Create early product prototypes for RF applications
- Low-latency, high-bandwidth connector options for SOSA capable clustering and data exchange on-chip memory
- PCIe endpoint operation enabling



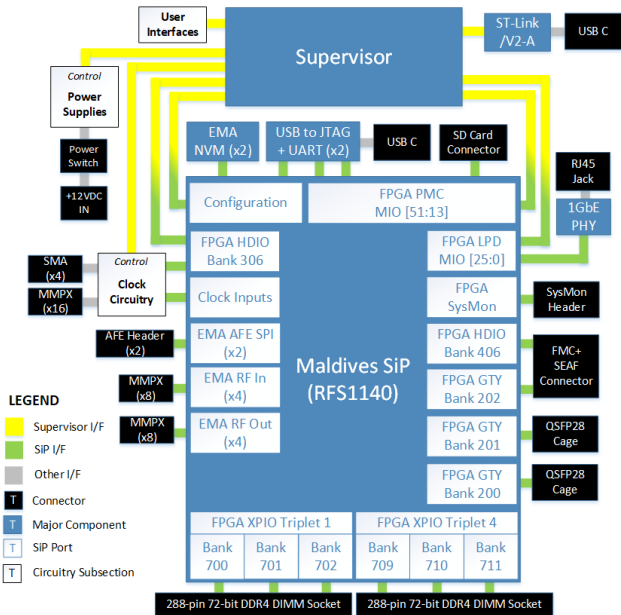
Test and evaluate analog signal performance for radar, instrumentation, electronic warfare and other RF applications on Mercury's RFS1140 Direct RF SiP with the EB-RFS1140 evaluation board (EB).

The EB-RFS1140 comes with SMAs that can connect directly to baluns and filters to easily configure analog front end and speeds application development.

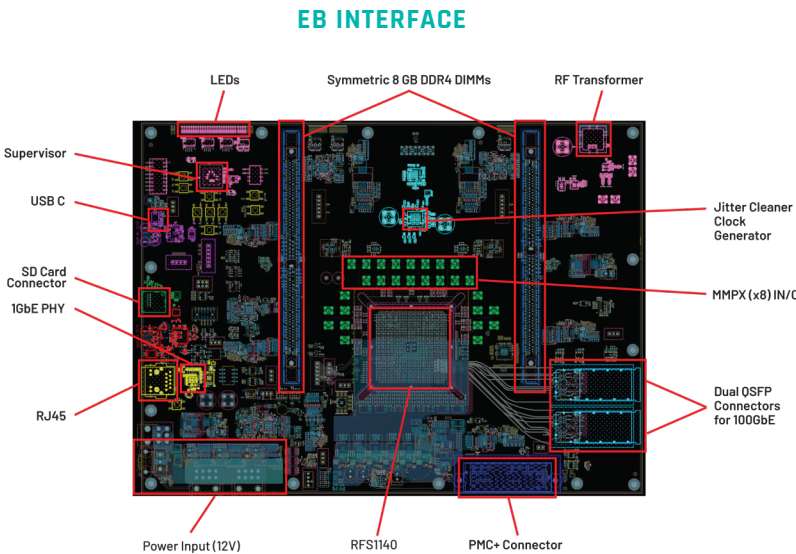
Features

- Differential pair RF and clock inputs for external signal generators
- Dual QSFP connectors for 2 x 100GbE
- Symmetric 8GB DDR4 DIMMS option for best capture bandwidth and storage for each Electra-MA sensor
- 1GbE management/control interface for low bandwidth sweep tools command/control packets
- Dual-parallel QSPI NOR flash or SD Card boot options
- USB-to-JTAG and UART for debug and shell command interface
- Four lane GTY bank and HDIO bank routed to FMC+ connector for custom applications
- FMC+ to PCIe finger connector cable for potential x4 PCIe endpoint operation (available from Samtech)
- Recognized in AMD-Xilinx Vivado/Vitis tools for BSP and drivers
- Linux and bare metal flash image options with radio/capture application software and firmware for easy out-of-the-box user experience
- EB PCIe lanes routed to PCIe 4.0 specifications
- Specialized cooling solution for maximum use of AMD ACAP fabric

Evaluation Board for RFS1140 System-in-Package (SiP)



CEB Block Diagram



KIT CONTENTS

- EB-RFS1140
- USB cable
- SD card
- Ethernet cable
- Power supply and power cable

ORDERABLE PART NUMBER

- EB-RFS1140-E: Early access RFS1140 EB kit

ADDITIONAL RESOURCES

- User Guide

CUSTOMER SUPPLIED MATERIALS

DESCRIPTION	MANUFACTURER	PART NO.	QTY
Broadband balun	Hyperlabs	HL9404	4
MMPX male to 2.92 mm male, 40 GHz, phase matched <1 ps	RF Coax Inc.	XK086MMHFJ-6-1 or XK086MRMHFJ-6-1	8
RF cable 2.92 mm to 2.92 male, 36 in.	Fairview Microwave	FMC2929085LF-36	4
DC block (optional for ADC)	SHF	DCB45R-A	8
RF cable SMA to SMA male, 36 in.	Fairview Microwave	FMC0202085LF-36	1



Corporate Headquarters

50 Minuteman Road
Andover, MA 01810 USA
+1978.967.1401 tel
+1866.627.6951 tel
+1978.256.3599 fax

International Headquarters

Mercury International

Avenue Eugène-Lance, 38
PO Box 584
CH-1212 Grand-Lancy 1
Geneva, Switzerland
+41 22 884 51 00 tel

Learn more

Visit mrcy.com/contactus



The Mercury Systems logo is a registered trademark of Mercury Systems, Inc. Other marks used herein may be trademarks or registered trademarks of their respective holders. Mercury products identified in this document conform with the specifications and standards described herein. Conformance to any such standards is based solely on Mercury's internal processes and methods. The information contained in this document is subject to change at any time without notice.