











AVM4127

12" Widescreen HD Display



FEATURES ///

-  12.1" 16:10 ASPECT RATIO DISPLAY
-  1280 X 800 RESOLUTION
-  SS, PIP, AND SBS MODES
-  HD, SD, AND VGA INPUTS
-  SD OUTPUT (OPTIONAL)
-  DVI INPUT (OPTIONAL)
-  NVIS COMPATIBILITY (OPTIONAL)
-  HEATED LCD (OPTIONAL)
-  REMOTE DIMMING (OPTIONAL)
-  RUGGED MILLED ALUMINUM FRAME

EXPAND YOUR POINT OF VIEW ///

Offering a bright HD display with the capability to display all signals from moving maps to the latest sensor turrets, the AVM4127 provides an array of features in a thin bezel package. An illuminated 10-button keypad provides the latest operational features — including menus, windowing, and source selection — in a single keystroke.

The AVM4127 has supported military, law enforcement, and paramilitary operations for years. End users and integrators trust the display's solid engineering, which provides robust structural reliability in a minimal bezel profile.

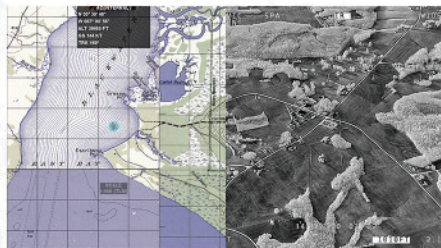
Many options are available including NVIS, remote dimming, heater glass, and DVI. Extensive features make the AVM4127 an industry-leading choice in compact, rugged displays.

AVALEX
TECHNOLOGIES

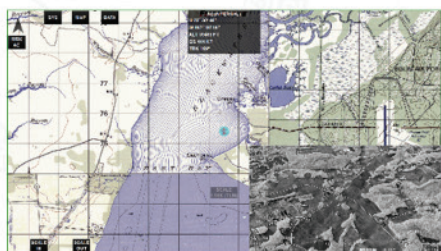
avalex.com



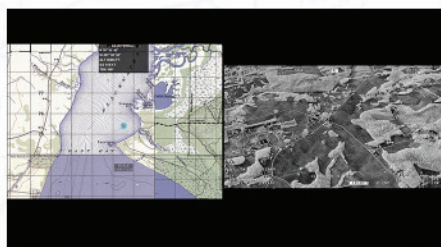
The AVM4127 offers four screen modes: full screen, split screen (SS), picture-in-picture (PIP), and picture-by-picture (PBP), also known as side-by-side. Full screen displays only one input signal and maintains the aspect ratio of the input source.



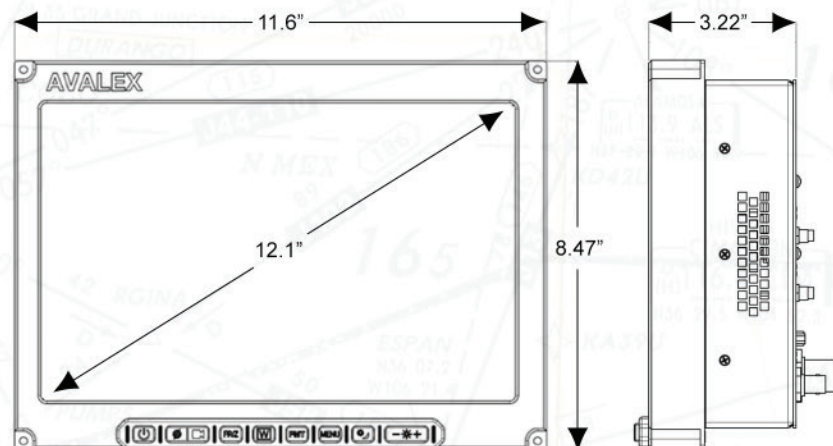
Split screen displays two input signals simultaneously; these images are positioned next to each other and stretched vertically to fit the screen.



Picture-in-picture also displays two inputs simultaneously, one in a large format and one in a smaller window whose position is configurable via the display setup menus.



Like split screen, picture-by-picture or side-by-side displays two inputs next to each other; these images, however, retain the aspect ratios of their respective video inputs. Excess screen space appears as black bars.



SPECIFICATIONS

DIMENSIONS //

Display Area	12.1" diagonal	307.34 mm
Height	8.47"	215.14 mm
Width	11.6"	294.64 mm
Depth	3.22"	81.79 mm
Weight	7 lbs	3.18 kg

I/O //

Power	28 VDC
Composite Video	3 inputs / 1 output (optional)
HD Video	2 inputs / 1 output
VGA	2 inputs
Signals	NTSC, PAL, SMPTE292M, VGA, DVI optional

CHARACTERISTICS //

Power Draw	1.2A at 28 VDC; 33.6 watts
Aspect Ratio	16:10
Resolution	1,280 (h) x 800 (v) pixels (WXGA)
Horiz. Viewing Angle	160°
Vert. Viewing Angle	140°
Contrast Ratio	700:1
NVIS	Class B (optional)
Operating Temp	-45 to +71 °C (with heater)

QUALIFICATIONS //

MIL-STD-810G	MIL-STD-461F
--------------	--------------

VARIANTS //

AVM4127N	NVIS-compatible
AVM4127V	Video out
AVM4127H	Heater
AVM4127G	Triax video connectors
AVM4127T	Touchscreen
AVM4127P	Passive cooling
AVM4127TI	DVI & touchscreen
AVM4127RT	Touchscreen & remote dimming
AVM4127TJ	Touchscreen & auto power-on