



AVM4177P

17" Widescreen HD Multi-Function Display

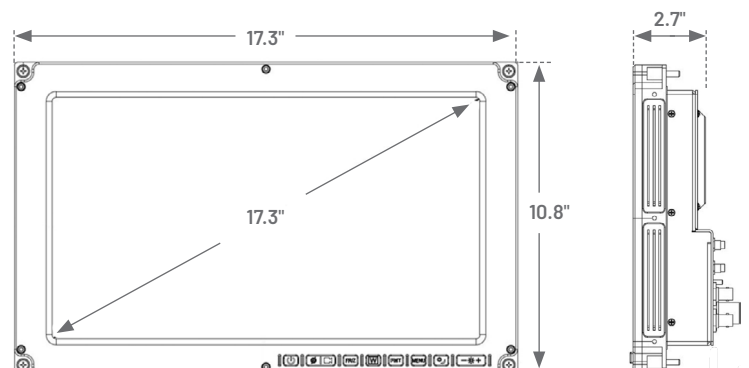
Upgrade to a large HD display when sensor and system details matter

- 17" HD widescreen display
- HD, SD, DVI, VGA inputs, HD, SD outputs
- Extensive interconnectivity with sensors and systems
- Multiple screen modes
- Passive cooling and thin, rugged chassis
- Options: NVIS, heated LCD, touchscreen and more



When bigger is better

- 17.3" 16:9 aspect ratio display
- 1920 x 1080 resolution
- HD, SD, DVI, VGA inputs, 1 HD/2 SD outputs
- Multiple screen modes
- Passive cooling
- Thin profile
- Rugged milled aluminum frame
- Sized to easily display digital maps next to HD sensor video for optimal effectiveness
- Illuminated bezel buttons
- Optional variants: NVIS compatibility, touchscreen, heated LCD, remote dimming

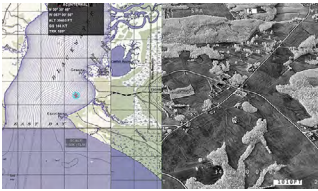


CONTACT US

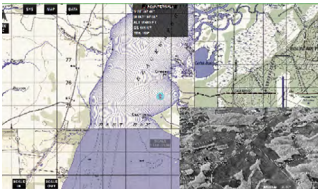
AVM4177P 17" Widescreen HD Multi-Function Display



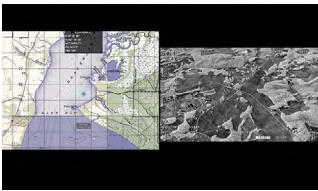
The AVM4177P offers four screen modes*: full screen, split screen (SS), picture-in-picture (PIP) and picture-by-picture (PBP), also known as side-by-side. Full-screen mode displays only one input signal and maintains the aspect ratio of the input source.



Split-screen mode displays two input signals simultaneously; these images are positioned next to each other and stretched vertically to fit the screen.



Picture-in-picture mode also displays two inputs simultaneously, one in a large format and one in a smaller window whose position is configurable via the display setup menus.



Like split screen, picture-by-picture or side-by-side mode displays two inputs next to each other; these images, however, retain the aspect ratios of their respective video inputs. Excess screen space appears as black bars.

*Modes are subject to change without notice.

SPECIFICATIONS

Dimensions

| | |
|--------------|----------------------------|
| Display Area | 17.3" (439.42 mm) diagonal |
| Height | 10.8" (276.23 mm) |
| Width | 17.3" (439.42 mm) |
| Depth | 2.7" (68.58 mm) |
| Weight | 11 lb (4.9 kg) |

I/O

| | |
|-----------------|---------------------------|
| Power | 28 VDC |
| Composite Video | 6 inputs/2 outputs |
| HD Video | 2 inputs/1 output |
| VGA | 2 inputs |
| DVI | 1 input/1 output |
| Signals | NTSC, PAL, SMPTE292M, VGA |

Characteristics

| | |
|----------------------|---|
| Power Draw | 1.8A @ 28 VDC (50.4 W); 4.8A @ 28 VDC (134.4 W) with heater |
| Aspect Ratio | 16:9 |
| Resolution | 1920 x 1080 pixels |
| Horiz. Viewing Angle | 160° |
| Vert. Viewing Angle | 140° |
| Contrast Ratio | 600:1 |
| NVIS | Class B (optional) |
| Operating Temp | -45°C to +71°C (with heater) |

Qualifications

MIL-STD-810G, MIL-STD-461F

Variants

| | |
|-----------|--------------------|
| AVM4177PN | NVIS-compatible |
| AVM4177PH | Heater |
| AVM4177PT | Touchscreen |
| AVM4177PE | Black rear housing |
| AVM4177PR | Remote dimming |

Contact

mission@rcy.com
+1 850.470.8464 tel

Learn more

rcy.com/displays



© 2022 Mercury Systems, Inc. The Mercury Systems logo and the following are trademarks or registered trademarks of Mercury Systems, Inc.: Mercury Systems, Innovation That Matters, and BuiltSECURE. Other marks used herein may be trademarks or registered trademarks of their respective holders. Mercury believes this information is accurate as of its publication date and is not responsible for any inadvertent errors. The information contained herein is subject to change without notice.

8142.00E-0422-ds-GulfBreeze-AVM_4177P