








AST3127

12" Rugged Display



FEATURES ///

-  12.1" 16:9 ASPECT RATIO DISPLAY
-  1280 X 800 RESOLUTION
-  DUAL CORE INTEL I7
-  THIN PROFILE
-  NVIS COMPATIBILITY (OPTIONAL)
-  TOUCHSCREEN (OPTIONAL)
-  REMOTE DIMMING (OPTIONAL)

RUGGED, POWERFUL & COMPACT ///

The AST3127 is a qualified, compact, rugged, airborne tablet computer with a capacitive touchscreen on a sunlight readable, NVIS qualified 12.1" WXGA display. Combining leading edge display technology with a powerful multi-core Intel i7 processor, the AST3127 incorporates a wide range of mission enhancing input / output capabilities in a thin package.

A unique optional capability is the integrated camera to implement a streaming VTC capability.

An airborne processor relies on data, and the AST3127 offers Gigabit Ethernet connectivity as well as USB. To allow simple connection to an onboard mission computer and to use the AST3127 as a display, a DisplayPort (DP) is provided as a compact method of providing a high speed graphical display.

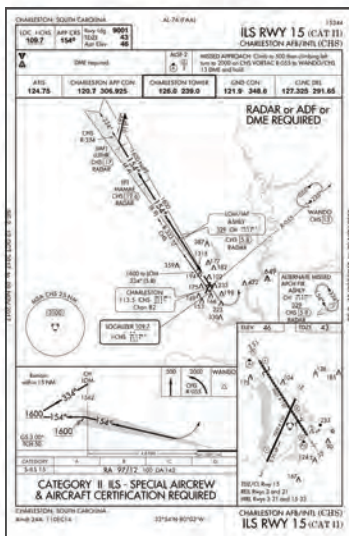
A provision for a solid state drive (SSD) as well as an SD card for critical mission planning uploads are provided to make the AST3127 the center of your future capabilities.

AVALEX
TECHNOLOGIES

avalex.com



Digital maps and connectivity have always been key to airborne situational awareness. Connected with an airborne mission network, the AST3127 now provides a leading edge platform for realtime updates of evolving mission progress. This great capability can be easily mounted in a panel or with a standard swing arm to allow viewing throughout the cockpit. With the large, bright, touchscreen enabled display, map rendering is razor sharp and fast. Update a flight plan or mission presets with quick access to the solid state drive or SD card that allows for quick uploads of critical data.



With the large size of the AST3127, operators can now view full size approach plates on the display. Use your mission planning software along with the lightning fast graphics of the AST3127 to remap routes, show weather, terrain and dynamic data link graphics.

With a capacitive touchscreen capability, the AST3127 now gives airborne networking operators simple pinch-zoom-swipe capability in a fully qualified, thin, lightweight package.

With a wide range of I/O the AST3127 can easily be used to push flight plans to other devices or to access bus data information when needed.

SPECIFICATIONS

DIMENSIONS //

Display Area	12.1" diagonal	307.3 mm
Height	8.25"	209.6 mm
Width	12.1"	307.3 mm
Depth	2.5"	63.5 mm
Weight	6.5 lbs	2.95 kg

I/O //

Power	28 VDC
Ethernet	1 GB
USB	1 Port
Display Port	1 Input
Discretes	5 Inputs / 1 Outputs
Serial	Touchscreen

CHARACTERISTICS //

Max Power Draw	2.7A at 28 VDC, 76 watts
Resolution	1280 x 800 WXGA
Aspect Ratio	16:9
Contrast Ratio	1000:1
Operating Temp	-40 to +71° C
Storage Temp	-55 to +80° C
NVIS	Class B

QUALIFICATIONS //

MIL-STD-810G	MIL-STD-461F
--------------	--------------

VARIANTS //

AST3127B	Touchscreen
----------	-------------

