










# AVM4077

## 7" HD Display



### FEATURES ///

-  7" 16:10 ASPECT RATIO DISPLAY
-  1280 X 800 RESOLUTION
-  HD, SD, DVI, AND VGA INPUTS / OUTPUTS
-  NVIS COMPATIBILITY (OPTIONAL)
-  SUNLIGHT-READABLE LCD
-  RUGGED MILLED ALUMINUM FRAME
-  COMPACT 7.15" WIDTH
-  THIN PROFILE
-  PASSIVE COOLING

### SMALL IS POWERFUL ///

When space is at a premium but an array of connection options are necessary, look to the AVM4077. Featuring HD, SD, DVI, and VGA inputs as well as optional NVIS compatibility with a compact 7" diagonal LCD, the AVM4077 offers exceptional capability packed into a 7.15" compact enclosure. The 10-button backlit bezel puts a wealth of functionality at the operator's fingertip, including windowing, source selection, map activation, dimming, and freeze/zoom capability.

Based on a proven design that has served military and law enforcement operators for nearly a decade, the AVM4077 offers robust structural reliability in its milled aluminum frame and solid engineering. When space is tight, but the mission needs input flexibility, look no further than the AVM4077.

**AVALEX**  
TECHNOLOGIES

[avalex.com](http://avalex.com)

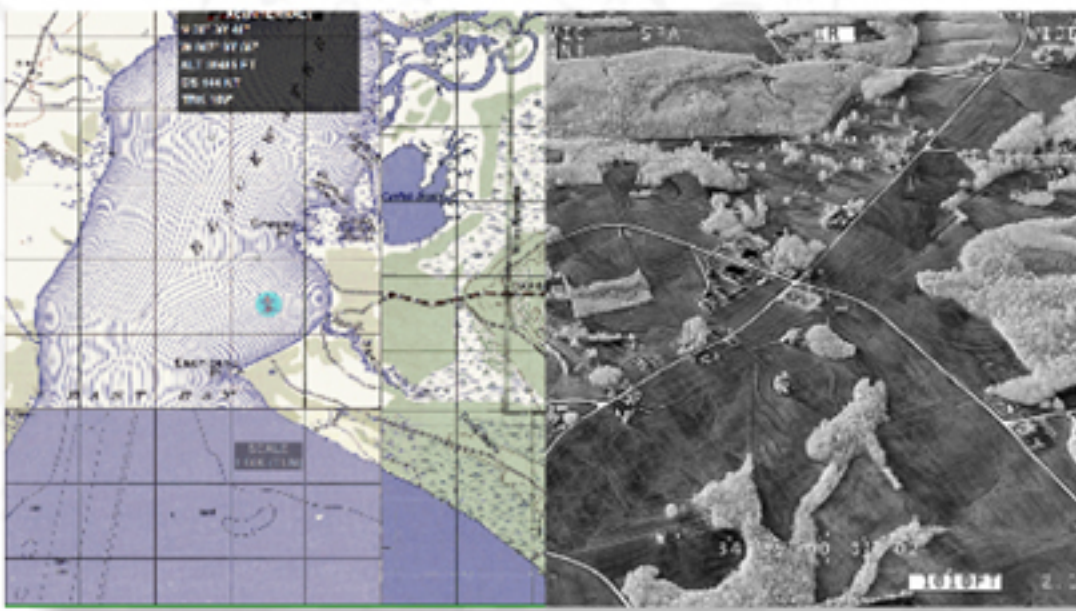


# AVM4077

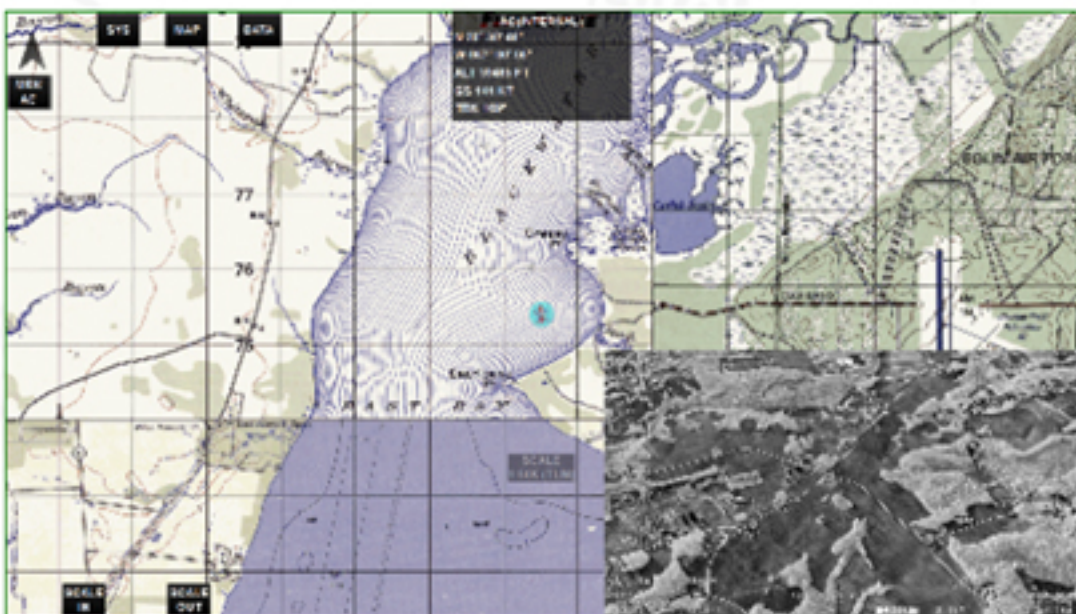
7" HD Display



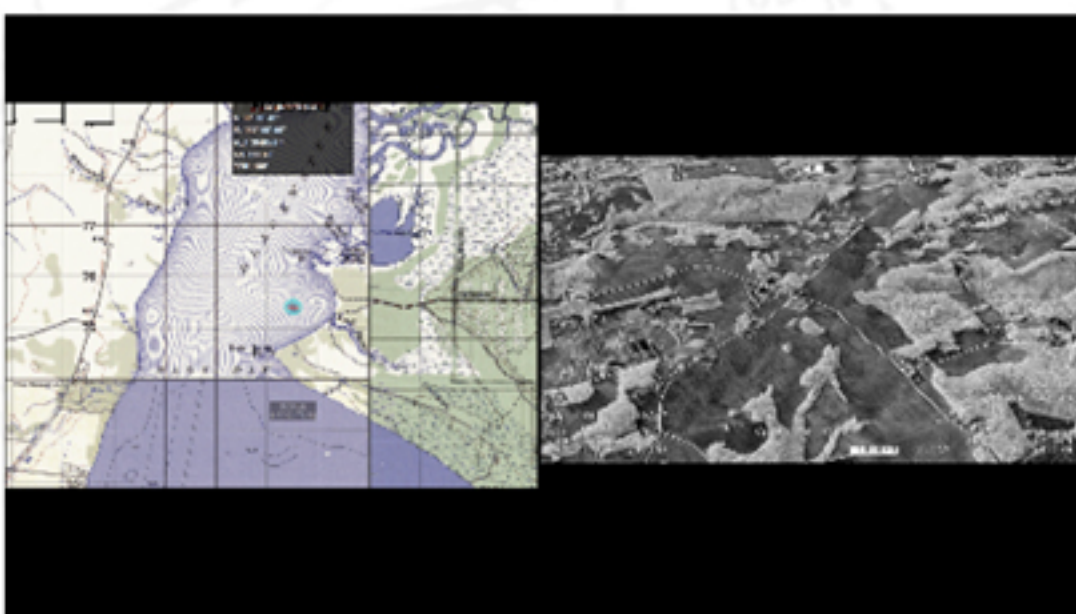
The AVM4077 offers four screen modes\*: full screen, split screen (SS), picture-in-picture (PIP), and picture-by-picture (PBP), also known as side-by-side. Full screen displays only one input signal and maintains the aspect ratio of the input source.



Split screen displays two input signals simultaneously; these images are positioned next to each other and stretched vertically to fit the screen.



Picture-in-picture also displays two inputs simultaneously, one in a large format and one in a smaller window whose position is configurable via the display setup menus.



Like split screen, picture-by-picture or side-by-side displays two inputs next to each other; these images, however, retain the aspect ratios of their respective video inputs. Excess screen space appears as black bars.

*\*Modes are subject to change without notice.*

## SPECIFICATIONS

### DIMENSIONS //

Display Area	7" diagonal	177.8 mm
Height	5.68"	144.27 mm
Width	7.15"	181.61 mm
Depth	0.70"	17.78 mm from back of bezel
Weight	1.7 lbs	0.77 kg

### I/O //

Power	28 VDC
Composite Video	3 inputs / 1 loopthrough
HD Video	1 input / 1 loopthrough
VGA	1
DVI	1

### CHARACTERISTICS //

Power Draw	0.39A at 28 VDC, 11 watts
Aspect Ratio	16:10
Resolution	1280 x 800
Horiz. Viewing Angle	160°
Vert. Viewing Angle	140°
Contrast Ratio	800:1
NVIS	Class B (optional)

### QUALIFICATIONS //

MIL-STD-810	MIL-STD-461
-------------	-------------

### VARIANTS //

AVM4077N	NVIS-compatible
----------	-----------------

