












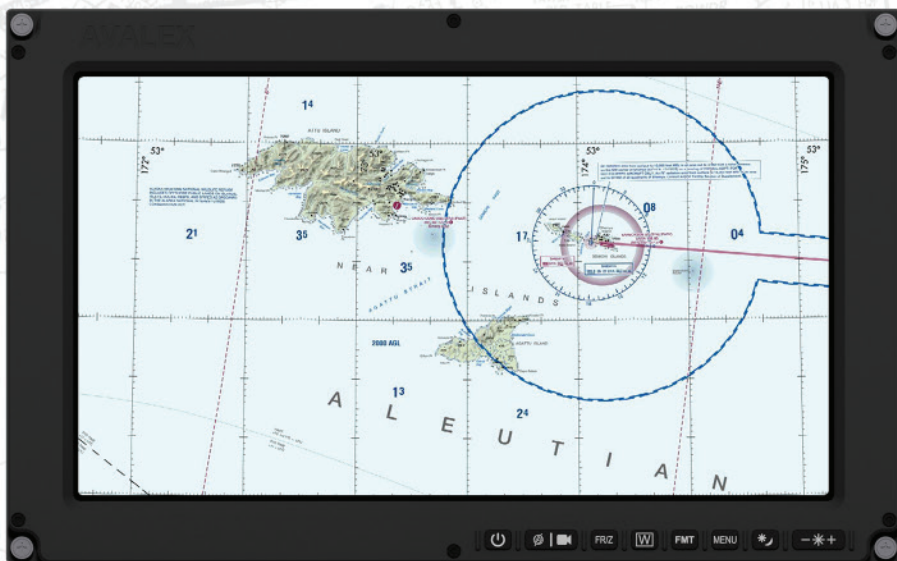
# AVM4167P

## 16" Widescreen HD Display



### FEATURES ///

-  15.6" 16:9 ASPECT RATIO DISPLAY
-  1920 X 1080 RESOLUTION
-  HD / SD / DVI / VGA INPUTS & 2 SD OUTPUTS
-  SS, PIP, AND SBS MODES
-  PASSIVE COOLING
-  THIN PROFILE
-  NVIS COMPATIBILITY (OPTIONAL)
-  TOUCHSCREEN (OPTIONAL)
-  HEATED LCD (OPTIONAL)
-  REMOTE DIMMING (OPTIONAL)
-  RUGGED MILLED ALUMINUM FRAME



### EXTEND YOUR REACH ///

The AVM4167P is a very compact, full HD display that is sunlight readable, field proven and provides the range of options and inputs required for the most demanding ISR missions. This display is perfect for single and dual sensor console mounting on ISR or maritime patrol aircraft where space is at a premium.

A simple 10 button, back illuminated keypad provides all of the immediate controls that operators expect. Picture-in-picture / picture-by-picture, all just one touch away. Easily place digital maps next to HD sensor video to quickly identify points of interest in the sensor imagery.

Not only is the AVM4167P bright, but it offers minimal bezel area as well as fanless operation, along with all of the popular options that operators seek, from touchscreen to remote dimming.

The AVM4167P is a leading edge thin, compact display for the most demanding missions.

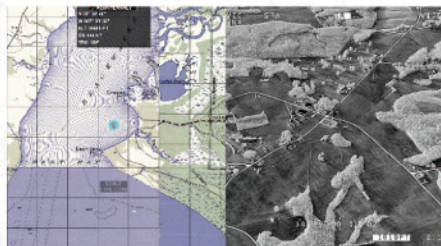
**AVALEX**  
TECHNOLOGIES

avalex.com

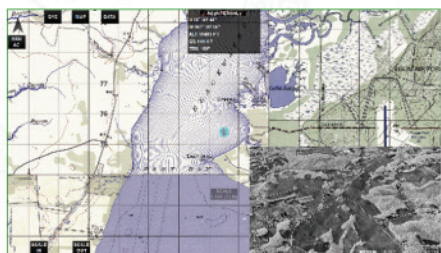




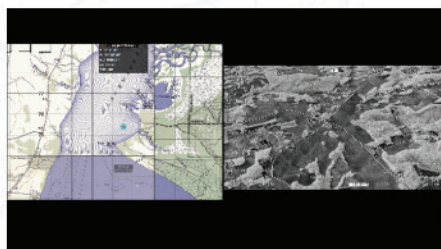
The AVM4167P offers four screen modes: full screen, split screen (SS), picture-in-picture (PIP), and picture-by-picture (PBP), also known as side-by-side. Full screen displays only one input signal and maintains the aspect ratio of the input source.



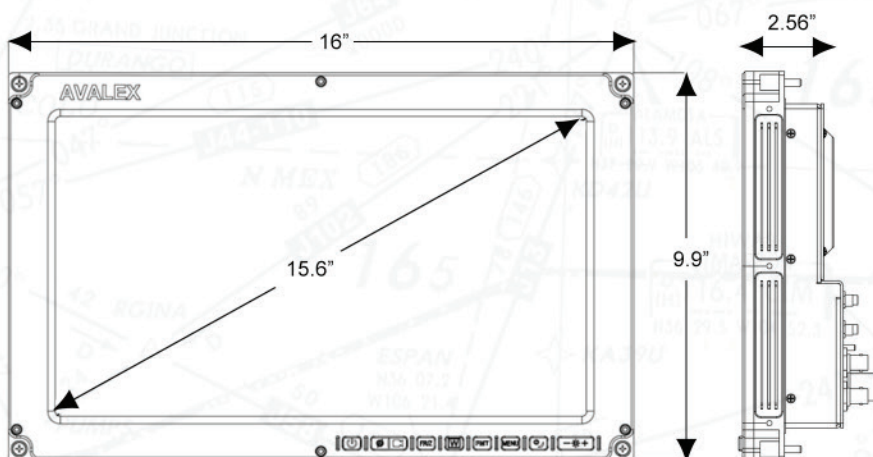
Split screen displays two input signals simultaneously; these images are positioned next to each other and stretched vertically to fit the screen.



Picture-in-picture also displays two inputs simultaneously, one in a large format and one in a smaller window whose position is configurable via the display setup menus.



Like split screen, picture-by-picture or side-by-side displays two inputs next to each other; these images, however, retain the aspect ratios of their respective video inputs. Excess screen space appears as black bars.



## SPECIFICATIONS

### DIMENSIONS //

Display Area	15.6" diagonal	396.2 mm
Height	9.9"	251.5 mm
Width	16"	406.4 mm
Depth	2.56"	65.02 mm
Weight	9.6 lbs	4.35 kg

### I/O //

Power	28 VDC
Composite Video	6 inputs / 2 outputs
HD Video	2 inputs / 1 output
VGA	2 inputs
DVI	1 input / output
Signals	NTSC, PAL, SMPTE292M, VGA

### CHARACTERISTICS //

Power Draw	1.7A at 28 VDC (47.6w); 4.8A at 28 VDC (134.4w) with heater
Aspect Ratio	16:9
Resolution	1,920 (h) x 1080 (v) pixels
Horiz. Viewing Angle	160°
Vert. Viewing Angle	160°
Contrast Ratio	1500:1
NVIS	Class B (optional)
Operating Temp	-45 to +71 °C (with heater)

### QUALIFICATIONS //

MIL-STD-810G	MIL-STD-461F
--------------	--------------

### VARIANTS //

AVM4167PN	NVIS-compatible
AVM4167PH	Heater
AVM4167PT	Touchscreen
AVM4167PE	Black rear housing
AVM4167PR	Remote dimming