

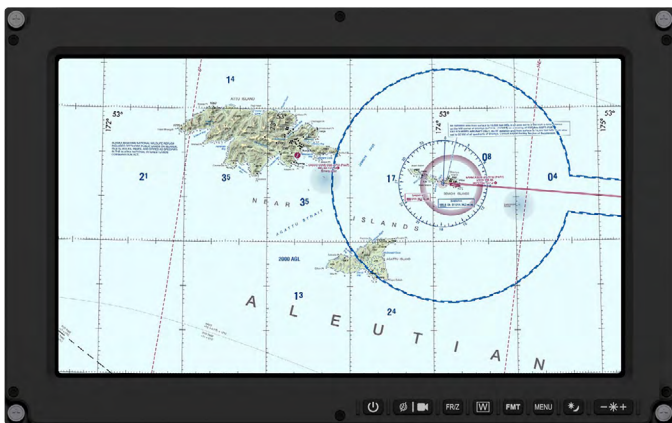


AVM4167P

16" Widescreen HD Multi-Function Display

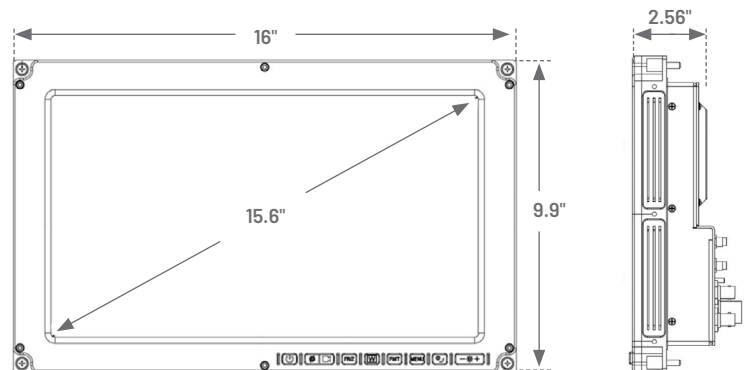
Choose the optimal size and function display for all mission needs and requirements

- 16" widescreen HD display
- HD, SD, DVI, VGA inputs, SD outputs
- Bezel controls
- Multiple screen modes
- Rugged chassis with thin profile
- Optional: NVIS, touchscreen, heated LCD and more



Extend your reach

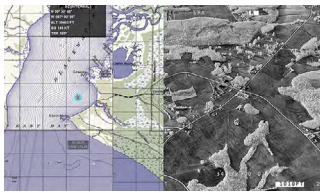
- 15.6" 16:9 aspect ratio display
- 1920 x 1080 resolution
- HD, SD, DVI, VGA inputs, 2 SD outputs
- Multiple screen modes
- Passive cooling
- Thin profile
- Rugged milled aluminum frame
- Sized to easily display digital maps next to HD sensor video for optimal effectiveness
- Illuminated bezel buttons
- Optional variants: NVIS compatibility, touchscreen, heated LCD, remote dimming



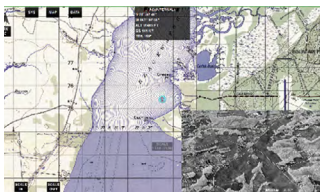
CONTACT US



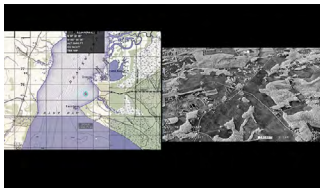
The AVM4167P offers four screen modes*: full screen, split screen (SS), picture-in-picture (PIP) and picture-by-picture (PBP), also known as side-by-side. Full-screen mode displays only one input signal and maintains the aspect ratio of the input source.



Split-screen mode displays two input signals simultaneously; these images are positioned next to each other and stretched vertically to fit the screen.



Picture-in-picture mode also displays two inputs simultaneously, one in a large format and one in a smaller window whose position is configurable via the display setup menus.



Like split screen, picture-by-picture or side-by-side mode displays two inputs next to each other; these images, however, retain the aspect ratios of their respective video inputs. Excess screen space appears as black bars.

*Modes are subject to change without notice.

SPECIFICATIONS

Dimensions

Display Area	15.6" (396.2 mm) diagonal
Height	9.9" (251.5 mm)
Width	16" (406.4 mm)
Depth	2.56" (65.02 mm)
Weight	9.6 lb (4.35 kg)

I/O

Power	28 VDC
Composite Video	6 inputs/2 outputs
HD Video	2 inputs/1 output
VGA	2 inputs
DVI	1 input/output
Signals	NTSC, PAL, SMPTE292M, VGA

Characteristics

Power Draw	1.7A @ 28 VDC (47.6 W); 4.8A @ 28 VDC (134.4 W) with heater
Aspect Ratio	16:9
Resolution	1920 x 1080 pixels
Horiz. Viewing Angle	160°
Vert. Viewing Angle	160°
Contrast Ratio	1500:1
NVIS	Class B (optional)
Operating Temp	-45°C to +71°C (with heater)

Qualifications

MIL-STD-810G, MIL-STD-461F

Variants

AVM4167PN	NVIS-compatible
AVM4167PH	Heater
AVM4167PT	Touchscreen
AVM4167PE	Black rear housing
AVM4167PR	Remote dimming

Contact

mission@rcy.com
+1 850.470.8464 tel

Learn more

rcy.com/displays



© 2022 Mercury Systems, Inc. The Mercury Systems logo and the following are trademarks or registered trademarks of Mercury Systems, Inc.: Mercury Systems, Innovation That Matters, and BuiltSECURE. Other marks used herein may be trademarks or registered trademarks of their respective holders. Mercury believes this information is accurate as of its publication date and is not responsible for any inadvertent errors. The information contained herein is subject to change without notice.

8141.00E-0422-ds-GulfBreeze-AVM_4167P