



SD SD-RS170

HD HD-SMPTE 292 / 424

Ethernet icon ETHERNET, CAN BUS, DISCRETES,
RS-232 / 422, MIL-STD-1553,
ARINC 429, USB

Small Form Factor icon SMALL FORM FACTOR

Passive Cooling icon PASSIVE COOLING

Removable Media icon SD, USB, SATA REMOVABLE MEDIA

GPS icon INTEGRATED GPS

MULTI-FUNCTIONAL AND RUGGED //

With integrated GPS and HD/SD video processing capability, Avalex's AMP3311 is a rugged and highly versatile mission processor and data bus manager, housed in a small, passively-cooled form factor. COM Express technology, proven in military aviation applications, provides a modular architecture that eases technology lifecycle management while allowing for on-the-fly changes to processing capability.

Numerous removable media options provide expandable storage, with full disk encryption (FDE) and encryption-at-rest options available. Designed to meet the demanding environments of military, air, and land vehicles, the AMP3311 is a solution outfitted for unique platform requirements, both now and in the future.

MULTI-FUNCTIONAL AND RUGGED //

With integrated GPS and HD/SD video processing capability, Avalex's AMP3311 is a rugged and highly versatile mission processor and data bus manager, housed in a small, passively-cooled form factor. COM Express technology, proven in military aviation applications, provides a modular architecture that eases technology lifecycle management while allowing for on-the-fly changes to processing capability.

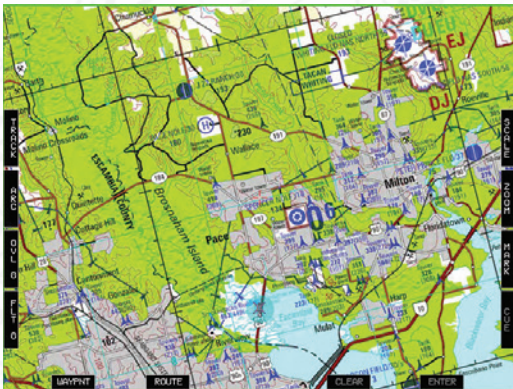
Numerous removable media options provide expandable storage, with full disk encryption (FDE) and encryption-at-rest options available. Designed to meet the demanding environments of military, air, and land vehicles, the AMP3311 is a solution outfitted for unique platform requirements, both now and in the future.

MULTI-FUNCTIONAL AND RUGGED //

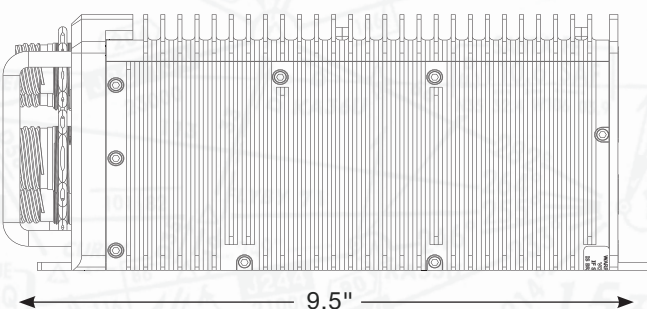
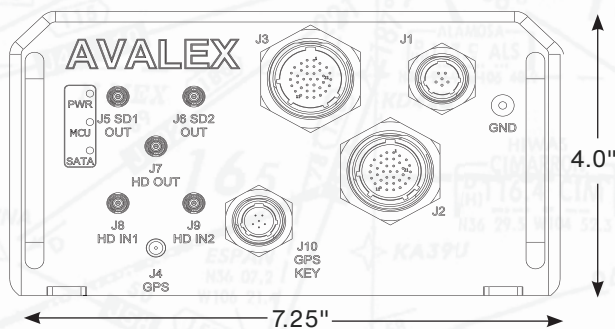
With integrated GPS and HD/SD video processing capability, Avalex's AMP3311 is a rugged and highly versatile mission processor and data bus manager, housed in a small, passively-cooled form factor. COM Express technology, proven in military aviation applications, provides a modular architecture that eases technology lifecycle management while allowing for on-the-fly changes to processing capability.

Numerous removable media options provide expandable storage, with full disk encryption (FDE) and encryption-at-rest options available. Designed to meet the demanding environments of military, air, and land vehicles, the AMP3311 is a solution outfitted for unique platform requirements, both now and in the future.

avalex.com



The AMP3311 comes with Avalex mapping software and also allows for the development of independent customer applications.



SPECIFICATIONS

DIMENSIONS //

Height.....	4.0"	101.6 mm
Width.....	7.25"	184.1 mm
Depth.....	9.5"	241.3 mm
Weight.....	≈8.4lbs	3.81 kg

I/O //

HD-SDI	2 in / 1 out
Ethernet	3 ports
RS-232	2 ports
RS-422	2 ports
ARINC 429	2 ports
MIL-STD-1553	2 ports
CAN Bus	2 ports
Discrete	4 in / 2 out

CHARACTERISTICS //

Power	28 VDC
Typical Power Draw	34 watts (1.2A @ 28V)
Cooling.....	Passive
Operational Temperature	-40°C to +55°C (+71°C for 30 minutes)
Storage Temperature	-55°C to +85°C
Processor.....	i5-7442EQ, quad core, 64GB memory
Graphics.....	HD graphics 630
OS	Supports Windows 7, Linux

QUALIFICATIONS //

Designed to meet DO-160 and MIL-STD-810 standards