

# Drop-in Isolator SMF950F0300

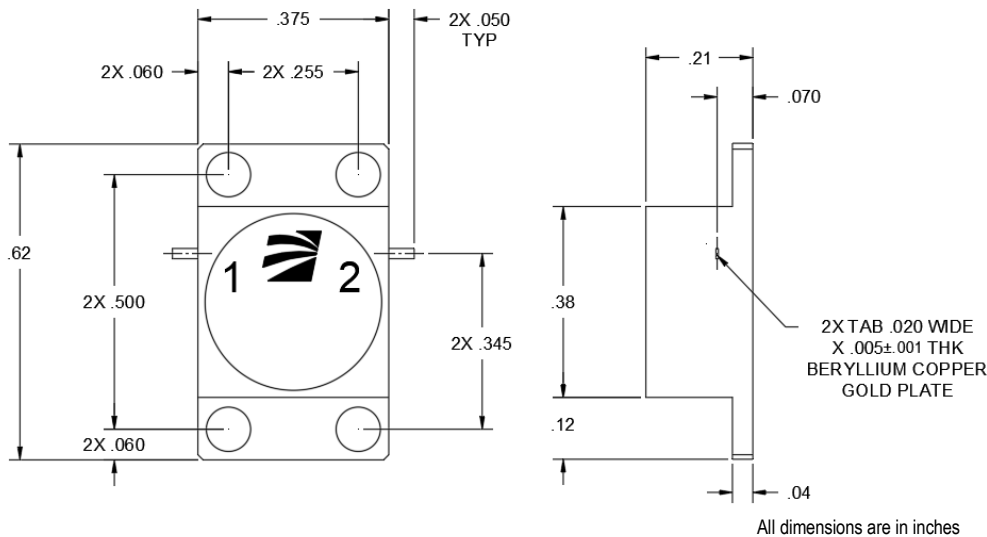


Specifications are subject to change without notice

## Specifications (+25°C)

Parameter	Value
RF Frequency	3.7 GHz to 4.3 GHz
Isolation	18 dB (min)
Insertion Loss	0.5 dB (max)
VSWR	1.25:1
Peak Power	50 Watts (max)
Average Power	5 Watts (max)
Power Forward	5 Watts
Power Reverse	0.5 Watts
Operating Temperature	-40 to 85°C
Package Size	0.375 x 0.62 x 0.21"

## Outline Drawing



## Need More Help? Need a Variant of This Product?

Contact Mercury's RF & Microwave engineering team at [rf.microwave@mrcy.com](mailto:rf.microwave@mrcy.com) or visit [www.mrcy.com/rf](http://www.mrcy.com/rf) for a detailed listing of RF and Microwave products.

