



AVM4066

6.5" HD Multi-Function Display

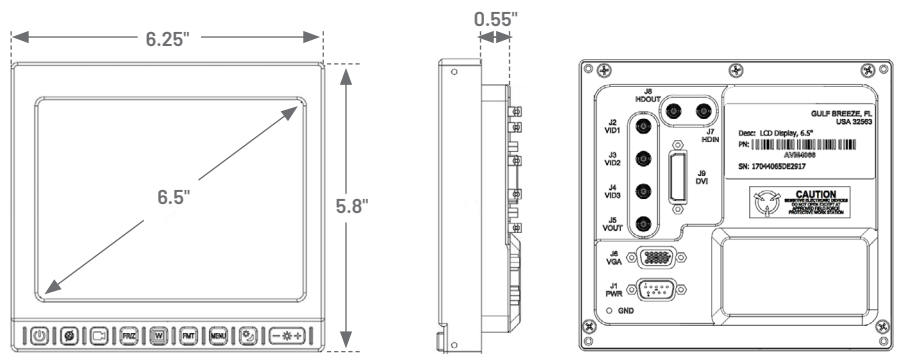
Bring HD into your cockpit with a proven and compact LCD

- 6.5" HD color display
- HD, SD, DVI and VGA I/O
- Sunlight-readable LCD
- Freeze/zoom capability
- Four screen modes
- Optional NVIS compatibility



Small is powerful

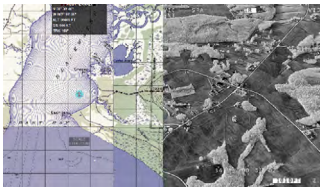
- 6.5" 4:3 aspect ratio display
- 640 x 480 resolution
- HD, SD, DVI and VGA inputs/outputs
- Sunlight-readable LCD
- Rugged milled aluminum frame
- 6.25" GA rack width
- Thin profile
- NVIS compatibility (optional)



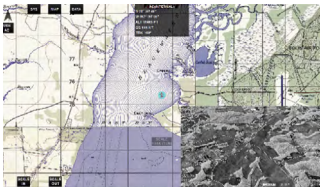
CONTACT US



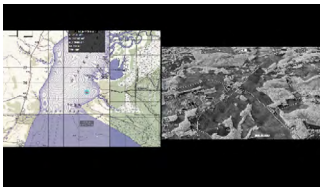
The AVM4066 offers four screen modes*: full screen, split screen (SS), picture-in-picture (PIP) and picture-by-picture (PBP), also known as side-by-side. Full-screen mode displays only one input signal and maintains the aspect ratio of the input source.



Split-screen mode displays two input signals simultaneously; these images are positioned next to each other and stretched vertically to fit the screen.



Picture-in-picture mode also displays two inputs simultaneously, one in a large format and one in a smaller window whose position is configurable via the display setup menus.



Like split screen, picture-by-picture or side-by-side mode displays two inputs next to each other; these images, however, retain the aspect ratios of their respective video inputs. Excess screen space appears as black bars.

*Modes are subject to change without notice.

SPECIFICATIONS

Dimensions

Display Area	6.5" (165.1 mm) diagonal
Height	5.8" (147.32 mm)
Width	6.25" (158.75 mm)
Depth	0.55" (13.97 mm) from back of bezel
Weight	1.78 lb (0.81 kg)

I/O

Power	28 VDC
Composite Video	3 inputs/1 loop-through
HD Video	1 input/1 loop-through
VGA	1
DVI	1
Signals	NTSC, PAL, SMPTE292M, VGA, DVI

Characteristics

Power Draw	0.38A @ 28 VDC, 10.34 W
Aspect Ratio	4:3
Resolution	640 x 480
Horiz. Viewing Angle	160°
Vert. Viewing Angle	140°
Contrast Ratio	600:1
NVIS	Class B (optional)

Qualifications

MIL-STD-810G, MIL-STD-461F

Variants

AVM4066N NVIS-compatible

Contact

mission@rcy.com
+1 850.470.8464 tel

Learn more

rcy.com/displays



© 2022 Mercury Systems, Inc. The Mercury Systems logo and the following are trademarks or registered trademarks of Mercury Systems, Inc.: Mercury Systems, Innovation That Matters, and BuiltSECURE. Other marks used herein may be trademarks or registered trademarks of their respective holders. Mercury believes this information is accurate as of its publication date and is not responsible for any inadvertent errors. The information contained herein is subject to change without notice.
8132.00E-0422-ds-GulfBreeze-AVM_4066