

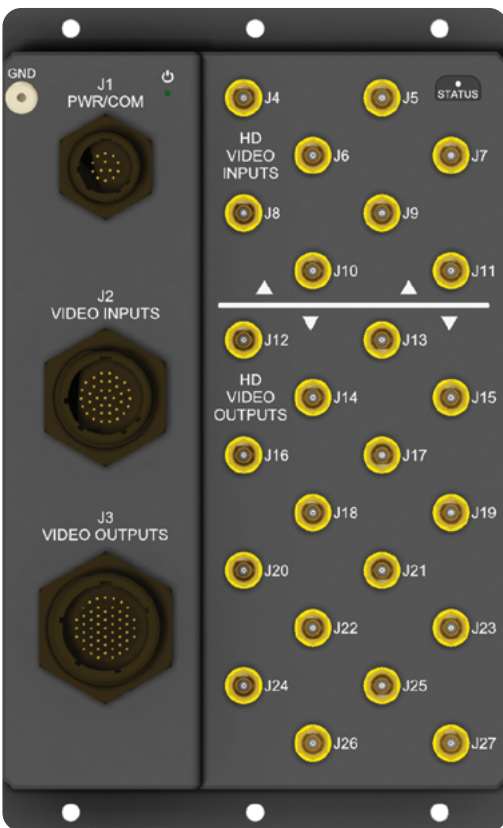


# AVC1816

## Aircraft Video Switch

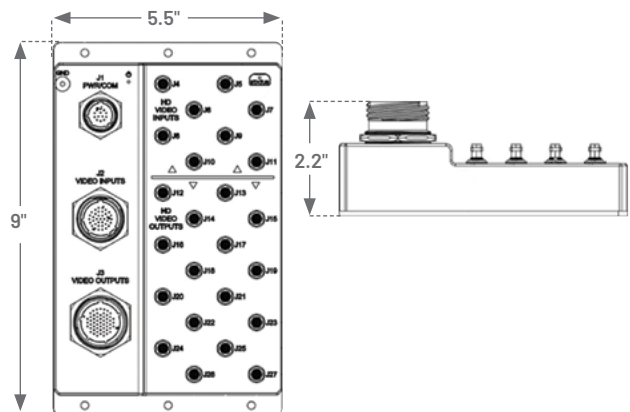
Effortlessly manage, switch and route analog and serial audio and video

- Manage video inputs for complex installations
- Route multiple analog video, audio and serial digital video sources
- Dynamic switching, fail-safe routing
- SD and HD RGB, RS-170, VGA, SMPTE 292/424 support
- NVIS-compliant remote control panel option
- Rugged, MIL-STD, small form factor

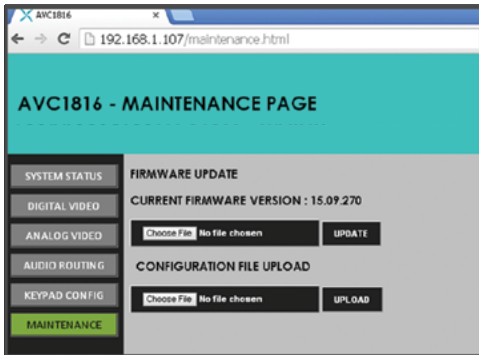


### Signals management simplified

- Manage video inputs for complex installations effortlessly
- Route multiple sources of analog video, audio and serial digital video
- Dynamic switching
- SD: RGB, RS-170, VGA
- HD: SMPTE 292 / 424
- Analog audio
- Ethernet, CANbus, discretes, RS-232
- Fail-safe routing
- Rugged, small form factor
- Optional NVIS-compliant remote control panel

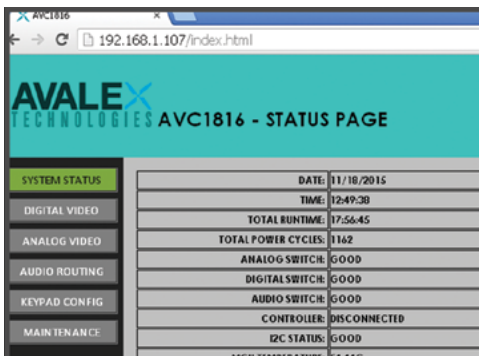


CONTACT US



### Customized Configuration

Want out-of-the-box support for fleet integrations? Mercury Systems will create and manage custom configurations of the AVC1816 smart video controller for a factory default delivery that provides the analog video routing, audio route/MUX and levels, remote keypad control configuration and Ethernet settings the mission requires. And with available remote assistance, configuration updates and field uploads are ready when you are.



### Smart Switch Status

Numerous internal sensors monitor the health and performance of the smart switch. Continuous built-in test results are shown in HTML GUI of the system status homepage. Lifetime usage statistics, internal communications status, operating temperatures and SDI digital signal are all monitored and reported.

### Fail-Safe Routing

In case of power outage, integrated fail-safe routing ensures STANAG, RS-170, RGB, SMTPE 292/424 signals will route through MIL-C-38999 Series III and HD BNC coaxial connectors.

## SPECIFICATIONS

### Dimensions

Height	9" (228.6 mm)
Width	5.5" (139.7 mm)
Depth	1.38" (35.1 mm)
Weight	1.9 lb (0.87 kg)

### I/O

SD Video Inputs	15
SD Video Outputs	24
HD Video Inputs	8
HD Video Outputs	16
Audio Inputs	3
Audio Outputs	2
Communications	Ethernet, CANbus, discrettes, RS-232
Signals	Analog audio/video, SMPTE 292M, SMPTE 242M Level A

### Characteristics

Power	28 VDC
Typical Power Draw	1 A at 28 VDC (28 w)
Temperature	-40°C to +70°C

### Qualifications

MIL-STD-810G, MIL-STD-461E, DO-160

### Contact

mission@rcy.com  
+1 850.470.8464 tel  
rcy.com/contactus

### Learn more

rcy.com/switches



© 2022 Mercury Systems, Inc. The Mercury Systems logo and the following are trademarks or registered trademarks of Mercury Systems, Inc.: Mercury Systems, Innovation That Matters, and BuiltSECURE. Other marks used herein may be trademarks or registered trademarks of their respective holders. Mercury believes this information is accurate as of its publication date and is not responsible for any inadvertent errors. The information contained herein is subject to change without notice.  
8118.00E-0422-ds-GulfBreeze-AVC\_1816