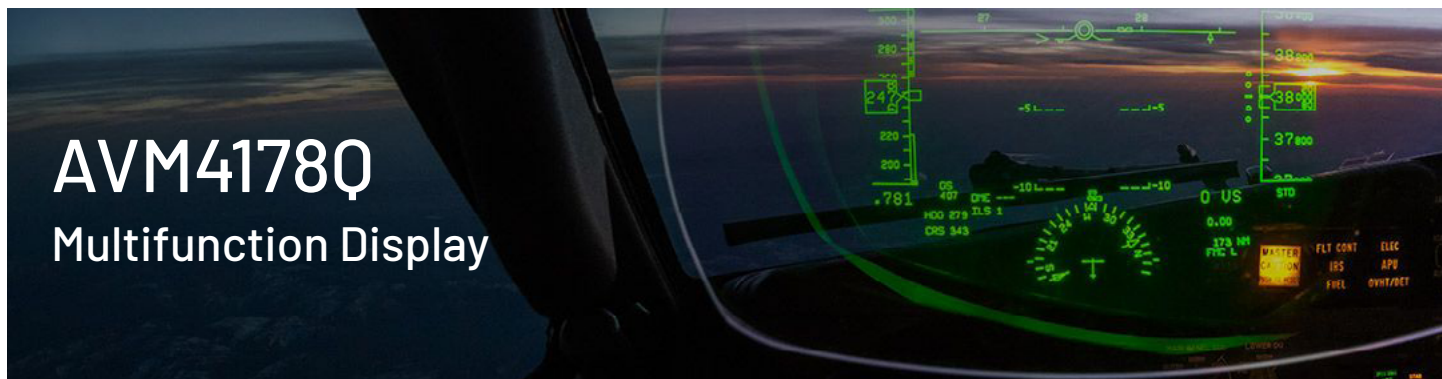


AVM4178Q

Multifunction Display



Simultaneously visualize multiple systems in HD with a 17" rugged display

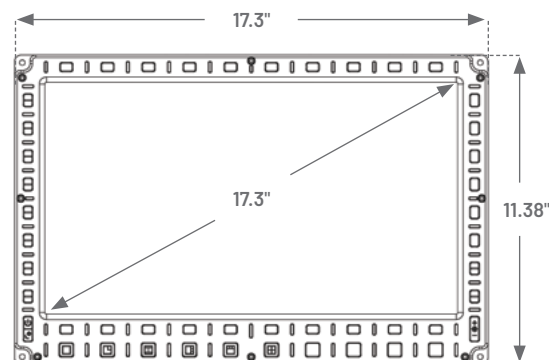
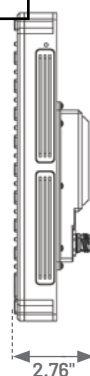
- 17.3" 16:9 aspect ratio, 1920 x 1080 resolution
- SD, HD, VGA, DVI, Ethernet, CANbus, USB I/O
- 7 screen modes
- Rugged, 6 kg, DO-160 display
- Configurable bezel buttons and I/O
- Touchscreen, NVIS, heated LCD options



Multi-Function Display, mfd, Avionics Display, DALI, NVIS, night vision, rugged display, military display, cockpit display, primary flight display, HD-SDI, Ethernet, CAN, USB, NVIS, LCD, Bezel, Rugged, DO-160

Situational awareness for your mission

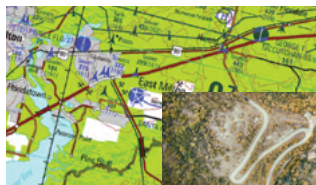
- 17.3" 16:9 aspect ratio display
- 1920 x 1080 resolution
- Inputs: SD, HD, VGA, DVI, Ethernet, CANbus, USB
- Outputs: SD, HD, DVI
- SS, PIP, SBS and quad screen modes
- Rugged, milled aluminum frame
- Bezel buttons and I/O configurable
- Optional variants: touchscreen, NVIS, heated LCD



CONTACT US



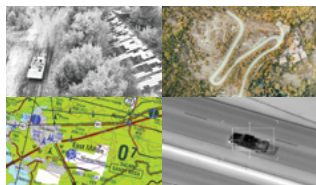
Full-screen mode displays only one input signal.



Picture-in-picture (PIP) mode displays two input signals simultaneously, one in a large format and one in a smaller window, whose position is configurable.



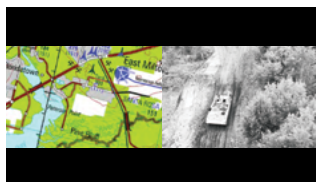
Split-screen (SS) mode displays two input signals simultaneously as equally sized images that are stretched/cropped to fit each window.



Quad mode displays four input signals in equal sizes.



Quad horizontal or vertical mode displays input signals as one large and three small images along top/bottom or left/right side of display.



Picture-by-picture (PBP), or side-by-side, mode displays two input signals next to each other as equally sized images whose aspect ratios are maintained. Excess screen space appears as black bars.

In each mode, aspect ratios can be maintained in letterbox format, or set to stretch and fit, or be cropped in viewing space.

SPECIFICATIONS

Dimensions

Display Area	17.3" diagonal (439.4 mm)
Height	11.38" (289.1 mm)
Width	17.3" (439.42 mm)
Depth	2.76" (70.1 mm)
Weight	13.5 lb (6.12 kg)

I/O

Power	28 VDC
RS-170	6 inputs/1 output
HD Video	4 inputs/2 output
VGA	2 inputs
DVI	2 inputs/1 output
Signal Types	NTSC, PAL, SMPTE-292, VGA, DVI, Ethernet, CANbus, USB

Characteristics

Power Draw (Max)	7 A @ 28 VDC
Aspect Ratio	16:9
Resolution	1920 x 1080
Operating Temperature	-40°C to +55°C

Qualifications

Designed to meet:
DO-160G

Options

NVIS Compliant (N) — Class B
Touchscreen (T)
Heater (H)

Contact

mission@rcy.com
+1 850.470.8464 tel
rcy.com/contactus

Learn more

rcy.com/displays



© 2022 Mercury Systems, Inc. The Mercury Systems logo and the following are trademarks or registered trademarks of Mercury Systems, Inc.: Mercury Systems, Innovation That Matters, and BuiltSECURE. Other marks used herein may be trademarks or registered trademarks of their respective holders. Mercury believes this information is accurate as of its publication date and is not responsible for any inadvertent errors. The information contained herein is subject to change without notice.
8110.00E-0422-ds-GulfBreeze-AVM_4178Q