












# AVM4147

14" Widescreen HD Display



## FEATURES ///

-  14.1" 16:10 ASPECT RATIO DISPLAY
-  1280 X 800 RESOLUTION
-  HD, SD, AND VGA INPUTS
-  SS, PIP, AND SBS MODES
-  NVIS COMPATIBILITY (OPTIONAL)
-  TOUCHSCREEN (OPTIONAL)
-  HEATED LCD (OPTIONAL)
-  REMOTE DIMMING (OPTIONAL)
-  VIDEO OUT (OPTIONAL)
-  DVI (OPTIONAL)
-  RUGGED MILLED ALUMINUM FRAME



## MAXIMUM VISIBILITY, MINIMUM FOOTPRINT ///

A bright, sunlight-readable, field-proven widescreen display, the AVM4147 provides the capability to display all the latest signals and inputs, from moving maps to state-of-the-art sensors, in a narrow bezel profile.

A rugged, milled display frame minimized around the 16:10 aspect-ratio LCD provides maximum active area in a minimal footprint. The illuminated 10-button keypad provides one-touch access for system setup, PIP and SBS windowing, and video input changes. The many options available, including NVIS, heated LCD, remote dimming, and touchscreen, make it easy to customize a display configuration to suit the demands of your particular mission.

The AVM4147 has a long history, providing military and law enforcement end users with a stable, reliable, solidly engineered display solution for nearly a decade.

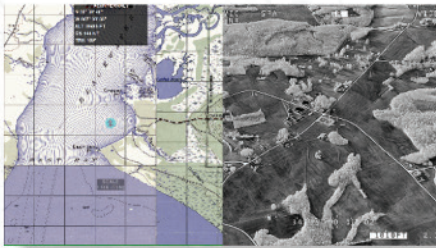
**AVALEX**  
TECHNOLOGIES

avalex.com

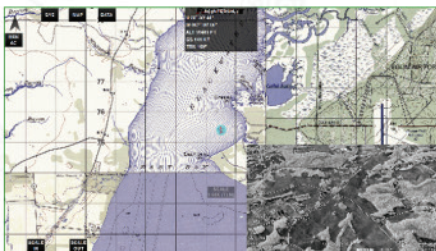




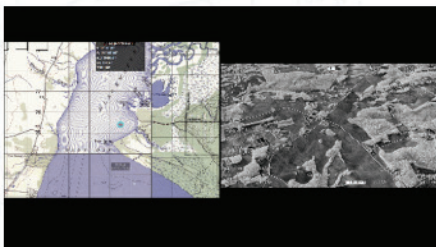
The AVM4147 offers four screen modes: full screen, split screen (SS), picture-in-picture (PIP), and picture-by-picture (PBP), also known as side-by-side. Full screen displays only one input signal and maintains the aspect ratio of the input source.



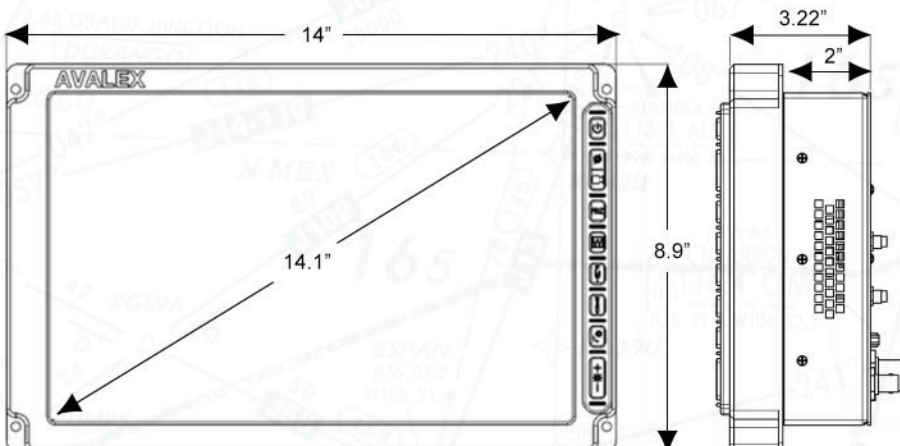
Split screen displays two input signals simultaneously; these images are positioned next to each other and stretched vertically to fit the screen.



Picture-in-picture also displays two inputs simultaneously, one in a large format and one in a smaller window whose position is configurable via the display setup menus.



Like split screen, picture-by-picture or side-by-side displays two inputs next to each other; these images, however, retain the aspect ratios of their respective video inputs. Excess screen space appears as black bars.



## SPECIFICATIONS

### DIMENSIONS //

Display Area	14.1" diagonal	358.14 mm
Height	8.9"	226.1 mm
Width	14"	355.6 mm
Depth	3.22"	81.8 mm overall
	2.00"	50.8 mm behind mounting plate
Weight	8.6 lbs	3.9 kg

### I/O //

Power	28 VDC
Composite Video	3 inputs / 1 output (optional)
HD Video	2 inputs / 1 output
VGA	2 inputs
Signals	NTSC, PAL, SMPTE292M, VGA, DVI (optional)

### CHARACTERISTICS //

Power Draw	36 watts
Aspect Ratio	16:10
Resolution	1,280 (h) x 800 (v) pixels (WXGA)
Horiz. Viewing Angle	160°
Vert. Viewing Angle	140°
Contrast Ratio	700:1
NVIS	Class B (optional)
Operating Temp	-45 to +71 °C (with heater)

### QUALIFICATIONS //

MIL-STD-810G	MIL-STD-461F
--------------	--------------

### VARIANTS //

AVM4147N	NVIS-compatible
AVM4147V	Video out
AVM4147H	Heater
AVM4147G	Triax video connectors
AVM4147T	Touchscreen
AVM4147TI	DVI & touchscreen
AVM4147RT	Remote dimming & touchscreen
AVM4147TE	Touchscreen & black rear housing