

AVM4177Q

17" Widescreen Quad HD Multi-Function Display

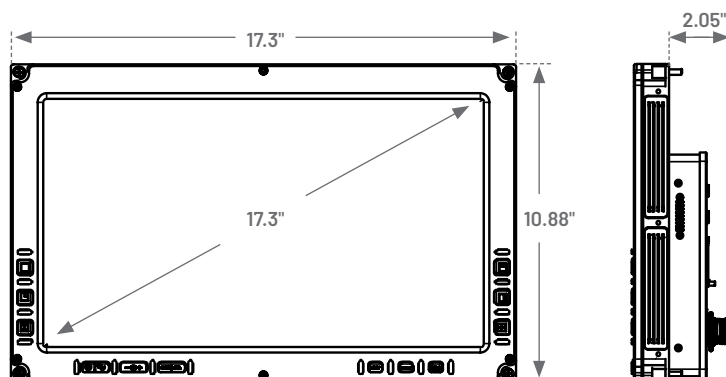
View four sources simultaneously for maximum mission capability and awareness

- 17" HD widescreen display
- HD, SD, DVI, VGA inputs, HD, SD outputs
- Extensive interconnectivity with sensors and systems
- Multiple screen modes with quad-screen mode
- Passive cooling and rugged chassis
- Options: NVIS, heated LCD, touchscreen and more



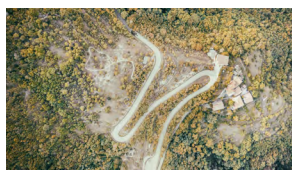
Bright, compact, effective

- 17.3" 16:9 aspect ratio display
- 1920 x 1080 resolution
- Inputs: 4 HD, 6 SD, 2 DVI, 2 VGA
- Outputs: 2 SD, 1 DVI
- Multiple screen modes, including quad-screen mode, allows inputs to be viewed simultaneously
- Extensive interconnectivity with cockpit sensors, map systems and mission computers
- Rugged, milled aluminum frame
- Thin profile
- Optional variants: touchscreen, NVIS compatibility, heated LCD, remote dimming

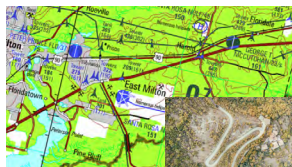


CONTACT US

AVM4177Q 17" Widescreen Quad HD Multi-Function Display



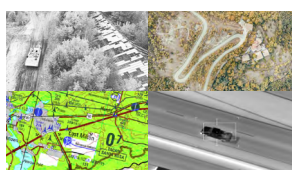
Full-screen mode displays only one input signal.



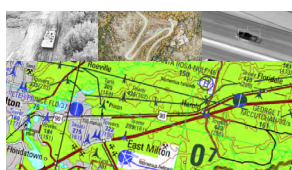
Picture-in-picture mode displays two input signals simultaneously, one in a large format and one in a smaller window, whose position is configurable.



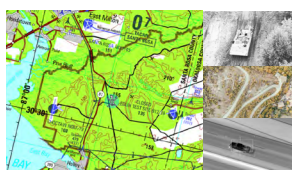
Split-screen (SS) mode displays two input signals simultaneously as equally sized images that are stretched/cropped to fit each window.



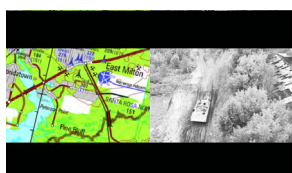
Quad-screen mode displays four input signals in four equal sizes.



Quad horizontal mode displays input signals as one large and three small images along the top or bottom side of the display.



Quad vertical mode displays input signals as one large and three small images along the left or right side of the display.



Picture-by-picture (PBP), or side-by-side mode, displays two input signals next to each other as equally sized images whose aspect ratios are maintained. Excess screen space appears as black bars.

In each mode, aspect ratios can be maintained in letterbox format, or set to stretch and fit, or be cropped in the viewing space.

SPECIFICATIONS

Dimensions

Display Area	17.3" (439.42 mm) diagonal
Height	10.88" (276.35 mm)
Width	17.3" (439.42 mm)
Depth	2.05" (52.07 mm)
Weight	11.0 lb (4.99 kg)

I/O

Power	28 VDC
RS-170A	6 inputs/2 outputs
SDI	4 inputs
VGA	2 inputs
DVI	2 inputs/1 output
Discrete	1 open/ground
Data	RS-232, USB, Ethernet, CANbus

Characteristics

Power Draw	2.5A @ 28 VDC
Aspect Ratio	16:9
Resolution	1920 x 1080
Horizontal Viewing	160°
Vertical Viewing	140°
Contrast Ratio	600:1
NVIS	Class B (optional)
Operating Temperature	-40°C to +55°C

Qualifications

Designed to meet
MIL-STD-810G, MIL-STD-461F

Contact

mission@mrccy.com
+1 850.470.8464 tel

Learn more

mrccy.com/displays



© 2022 Mercury Systems, Inc. The Mercury Systems logo and the following are trademarks or registered trademarks of Mercury Systems, Inc.: Mercury Systems, Innovation That Matters, and BuiltSECURE. Other marks used herein may be trademarks or registered trademarks of their respective holders. Mercury believes this information is accurate as of its publication date and is not responsible for any inadvertent errors. The information contained herein is subject to change without notice.
8143.00E-0422-ds-GulfBreeze-AVM_4177Q