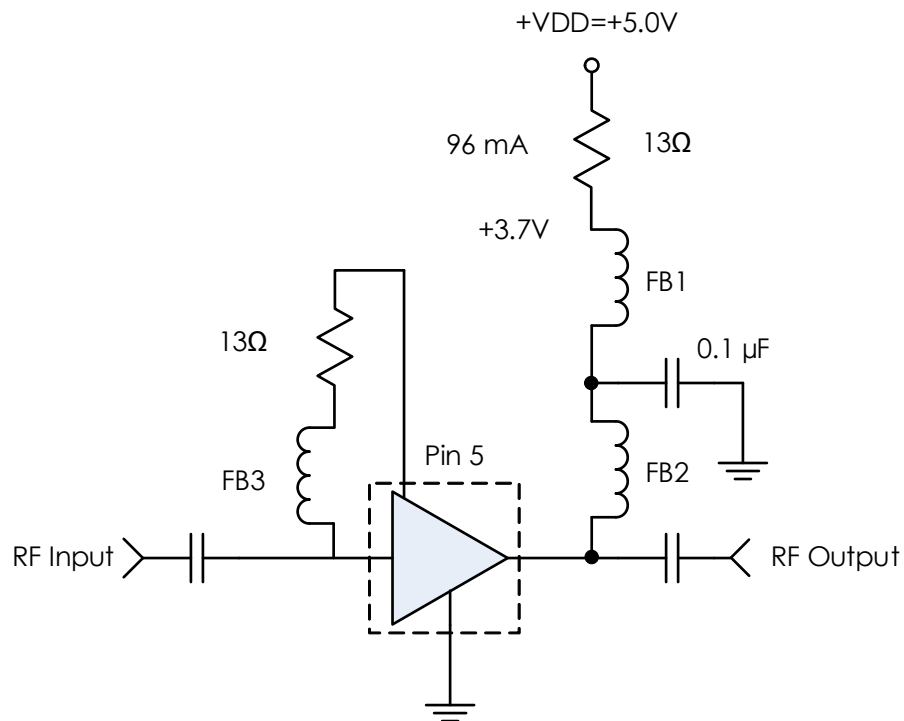


RECOMMENDED APPLICATION



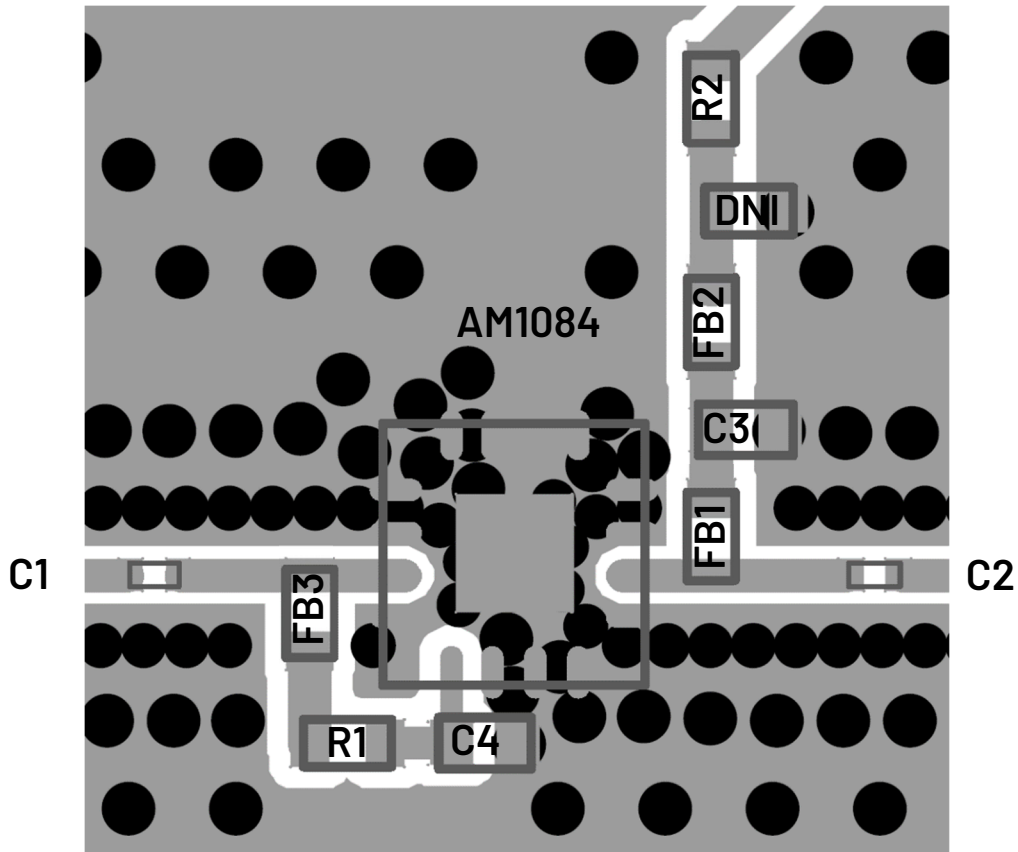
RECOMMENDED COMPONENT LIST (OR EQUIVALENT)

Part	Value	Part Number	Manufacturer
C1, C2	0.1 uF	0201BB104KW160	Passives Plus
C3	0.1 uF	GRM155R71C104KA88	Murata
FB1 - FB3	-	MMZ1005A222E	TDK
R1, R2	13Ω	RC0402FR-0713RL	Yageo

Notes:

- C1 and C2 should be low-loss broadband capacitors for optimum performance.
- Recommended voltage of +3.7V +/- 0.1V at node shown, the DC input of the RF choke.
 - If alternative ferrite beads or bias tee is to be chosen, try to maintain a similar DCR to the recommended components above
 - DC current draw in this configuration is 96 mA +/- 5%
 - If a +5.0V source is to be used, a 13Ω dropping resistor is recommended to achieve the proper voltage at the DC input of the RF choke.
- Resistors with tolerance of 1% are recommended though 2% resistors may be used as well. Tolerance should not exceed 2%.
- Components recommended above are 0402 components though 0201 components may also be used.

RECOMMENDED LAYOUT



Notes:

1. C4 = C3 = GRM155R71C104KA88. C4 recommended for better noise performance.
2. Recommended input trace is grounded coplanar waveguide, 50 ohms.
3. IC and RF input / output should be via fenced.
4. Vias should be placed under IC and GND pads.

REVISION HISTORY

Date	Revision	Notes
February 8, 2021	1	Initial release
July 18, 2024	2	Changed to Mercury branding. No content changes.

For more information, contact: MMICsupport@mrchy.com

The Mercury Systems logo is a registered trademark of Mercury Systems, Inc. Other marks used herein may be trademarks or registered trademarks of their respective holders. Mercury products identified in this document conform with the specifications and standards described herein. Conformance to any such standards is based solely on Mercury's internal processes and methods. The information contained in this document is subject to change at any time without notice.

© 2024 Mercury Systems, Inc. 2-0-2024-07-18-AN-AM1084