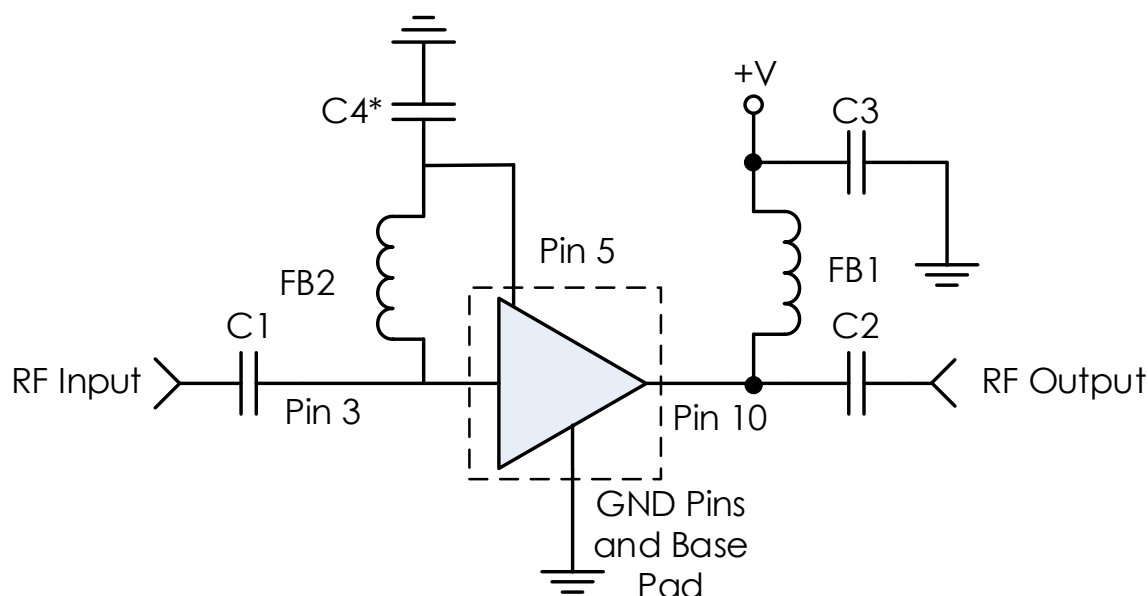


RECOMMENDED APPLICATION



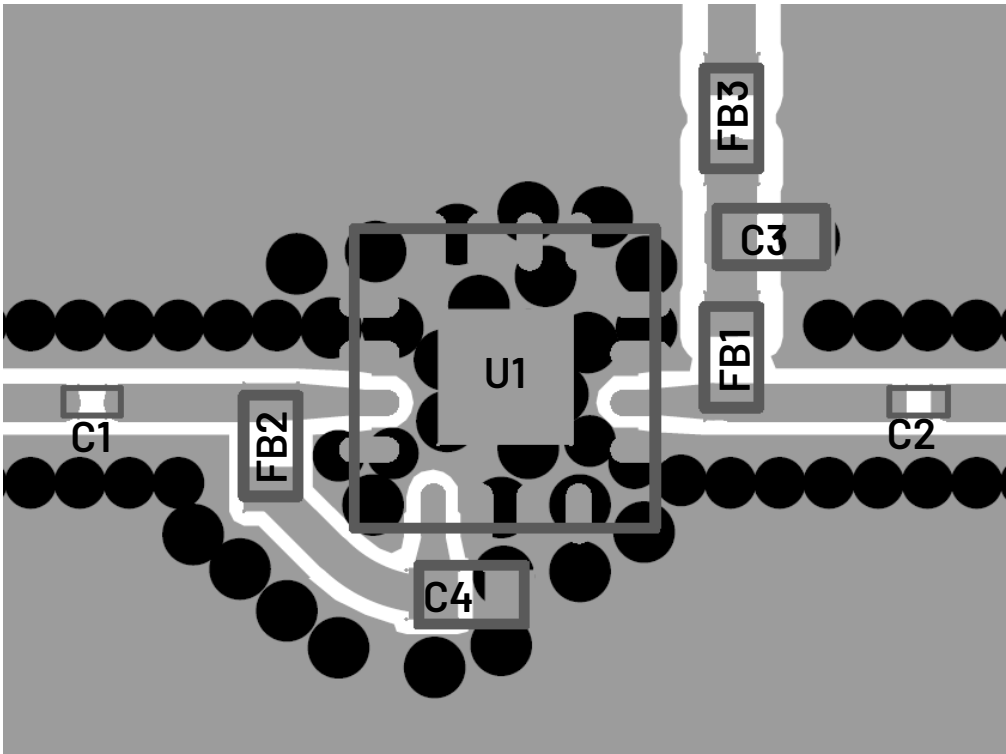
RECOMMENDED COMPONENT LIST (OR EQUIVALENT)

Part	Value	Part Number	Manufacturer
C1, C2	0.1 uF	0201BB104KW160	Passives Plus
C3, C4	0.1 uF	GRM155R71C104KA88	Murata
FB1 - FB3	-	BLM15HG102SN1D	TDK

Notes:

- Application shown above is the minimum needed for an operational circuit. The circuit above is representative of the s-parameters as available on the website.
- Install C4 for best noise figure below 50 MHz. If operating above 50 MHz, C4 is not needed.
- To choose the best component for FB2, Atlanta Micro recommends the following:
 - First, determine your desired frequency range of operation.
 - Choose an appropriate FB1 component that has a maximum current rating above the operating point of the device.
 - Next, design your output bias tee (FB1/C3 + any other components) for your desired power supply isolation and chosen frequency range.
 - The component(s) used for FB2 should then be component(s) as used in your bias tee that connect to the main RF output (pin 10) line only.
 - This does not need to be the whole bias tee design.
 - This should be all components before the first decoupling capacitor on the bias tee.
 - In the example above, FB2 = FB1.

RECOMMENDED LAYOUT



Notes:

- 1. FB3 = FB1 = BLM15HG102SN1D for symmetry.
- 2. C4 = C3 = GRM155R71C104KA88. C4 recommended for better noise figure performance below 50 MHz. If operating above 50 MHz C4 is not needed.
- 3. Recommended input trace is grounded coplanar waveguide, 50 ohms.
- 4. IC and RF input / output should be via fenced.
- 5. Vias should be placed under IC and GND pads.
- 6. Components recommended and shown above are 0402 components though 0201 component may also be used.

REVISION HISTORY

Date	Revision	Notes
May 22, 2023	1	Initial release
July 29, 2024	2	Changed to Mercury branding. No content changes.

For more information, contact: MMICsupport@mrcty.com

The Mercury Systems logo is a registered trademark of Mercury Systems, Inc. Other marks used herein may be trademarks or registered trademarks of their respective holders. Mercury products identified in this document conform with the specifications and standards described herein. Conformance to any such standards is based solely on Mercury's internal processes and methods. The information contained in this document is subject to change at any time without notice.

© 2024 Mercury Systems, Inc. 2-0-2024-07-29-AN-AM1143