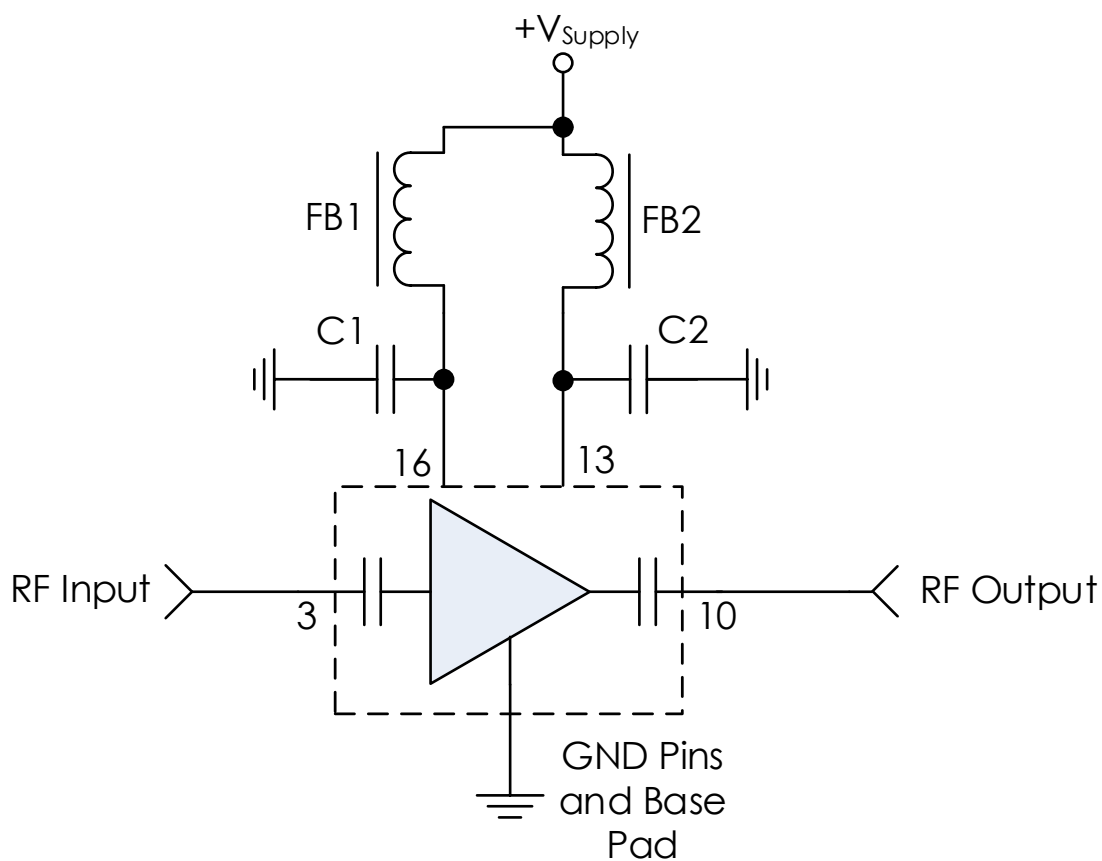


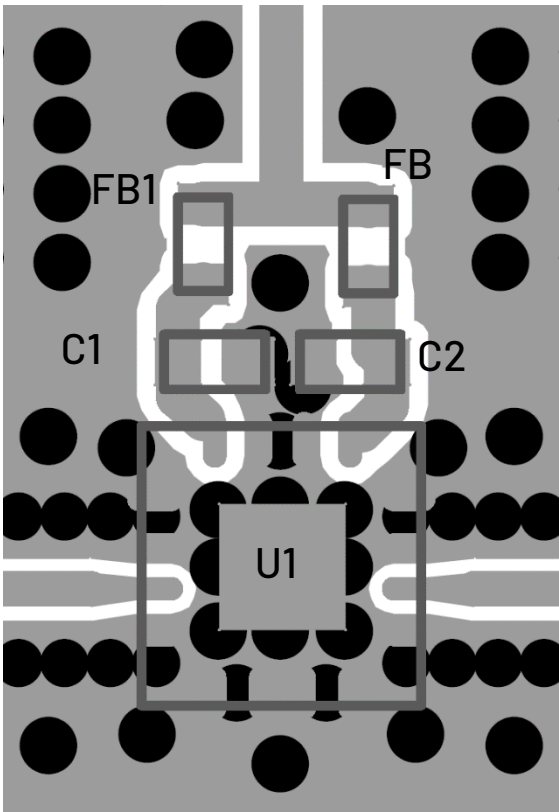
TYPICAL APPLICATION



RECOMMENDED COMPONENT LIST (OR EQUIVALENT)

Part	Value	Part Number	Manufacturer
C1, C2	0.1 μ F	GRM155R71C104KA88	Murata
FB1, FB2	-	MMZ1005A222E	TDK

RECOMMENDED LAYOUT



Notes:

- 1. No DC blocks needed on RF input and output as IC is internally DC blocked.
- 2. Recommended input trace is grounded coplanar waveguide, 50 ohms.
- 3. IC and RF input / output should be via fenced.
- 4. Vias should be placed under IC and GND pads.
- 5. On AM1053, pins 1 and 14 **MUST** be left as Do Not Connect. Pins may be grounded for other amplifiers with this footprint, but if there is possibility that one would switch to the AM1053 leave these pins as Do Not Connect.

REVISION HISTORY

Date	Revision	Notes
June 25, 2020	1	Initial release.
August 13, 2024	2	Changed to Mercury branding. No content changes.

For more information, contact: MMICsupport@mrchy.com

The Mercury Systems logo is a registered trademark of Mercury Systems, Inc. Other marks used herein may be trademarks or registered trademarks of their respective holders. Mercury products identified in this document conform with the specifications and standards described herein. Conformance to any such standards is based solely on Mercury's internal processes and methods. The information contained in this document is subject to change at any time without notice.