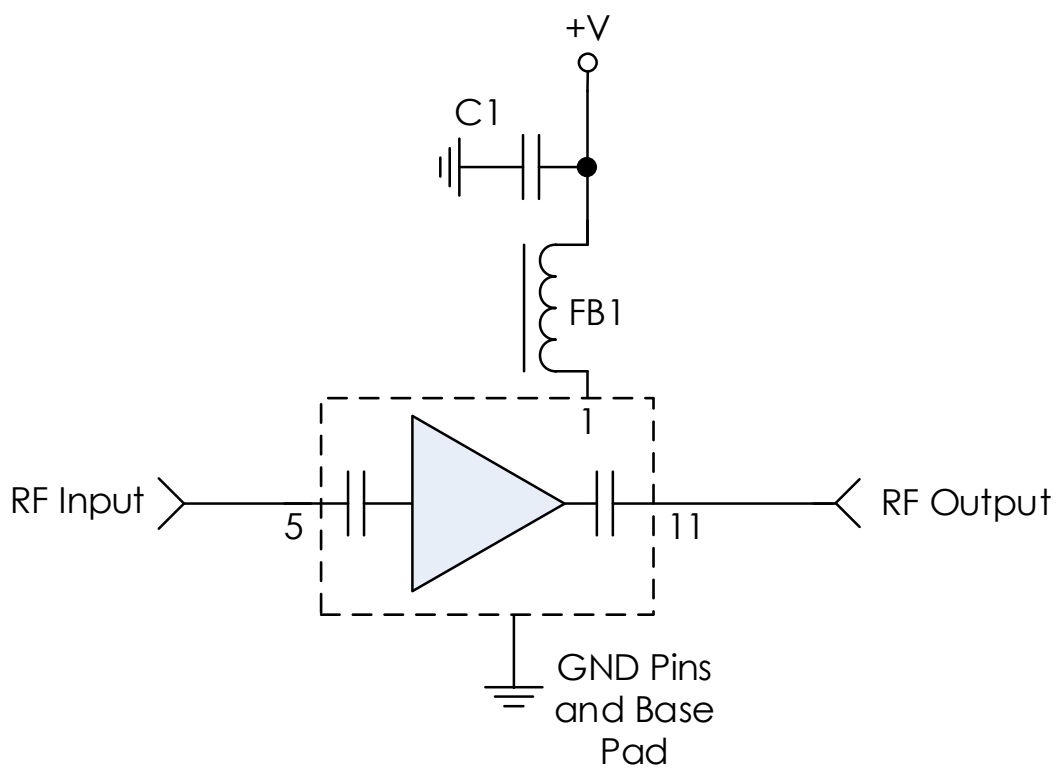


APPLICATION NOTE

3mm 12 Lead Amplifier – Single VDD

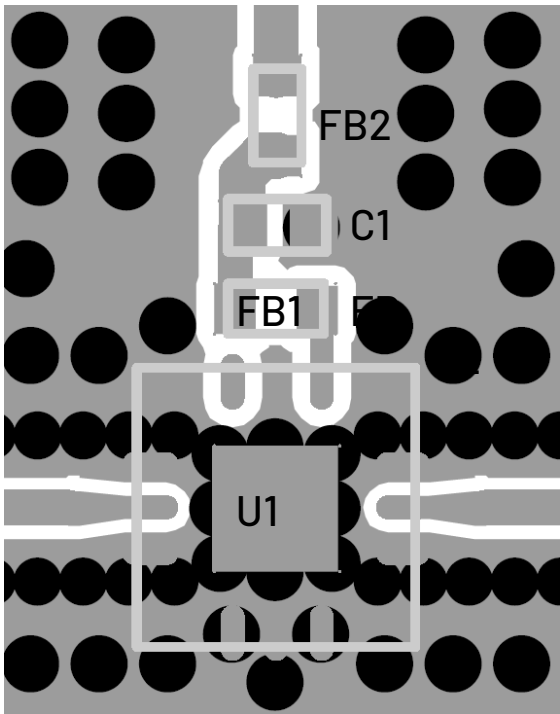
RECOMMENDED APPLICATION



RECOMMENDED COMPONENT LIST (OR EQUIVALENT)

Part	Value	Part Number	Manufacturer
C1	0.1 uF	GRM155R71C104KA88	Murata
FB1	-	MMZ1005A222E	TDK

RECOMMENDED LAYOUT



Notes:

- 1. No DC blocks needed on RF input and output as IC is internally DC blocked.
- 2. Recommended input trace is grounded coplanar waveguide, 50 ohms.
- 3. IC and RF input / output should be via fenced.
- 4. Vias should be placed under IC and GND pads.
- 5. FB2 = FB1 = MMZ1005A222E in layout above. Component included for extra power supply rejection and not necessary for part operation.
- 6. If top layer dielectric is < 6 mils then ground cutouts should be added under pins 5 and 11 to minimize parasitic capacitance on layers until ground reference is 6mils or greater. A cutout of 0.4mm x 0.8mm is recommended.

REVISION HISTORY

Date	Revision	Notes
August 5, 2021	1	Initial release.
August 12, 2024	2	Changed to Mercury branding. No content changes.

For more information, contact: MMICsupport@mrchy.com

The Mercury Systems logo is a registered trademark of Mercury Systems, Inc. Other marks used herein may be trademarks or registered trademarks of their respective holders. Mercury products identified in this document conform with the specifications and standards described herein. Conformance to any such standards is based solely on Mercury's internal processes and methods. The information contained in this document is subject to change at any time without notice.

© 2024 Mercury Systems, Inc. 2-0-2024-08-12-AN-3mm 12L Amplifier Single VDD