

AM1100-D – Amplifier

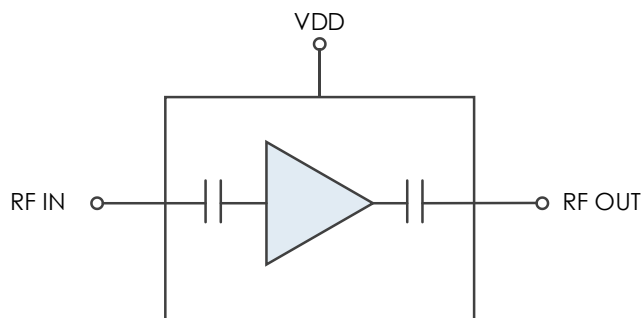
2 to 26.5 GHz Broadband LNA

AM1100-D is a wideband, cascadable amplifier servicing the 2 to 26.5 GHz frequency range. It is a low SWaP device drawing less than 100mW of power and available as bare die in a 1.34mm x 0.94mm footprint with internal 50Ω matching and DC blocking capacitors. The device's low noise figure and wideband operation makes it an excellent choice for many broadband receiver applications.

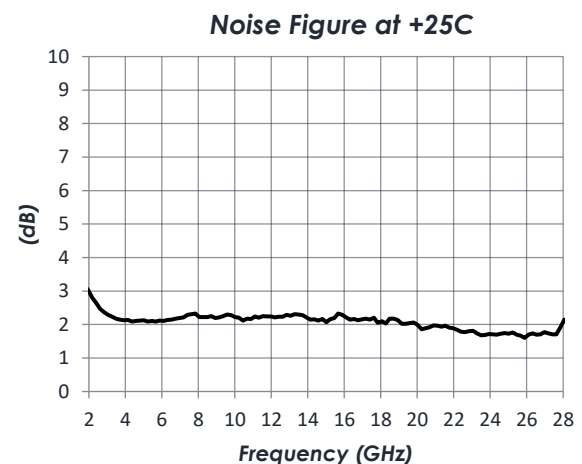
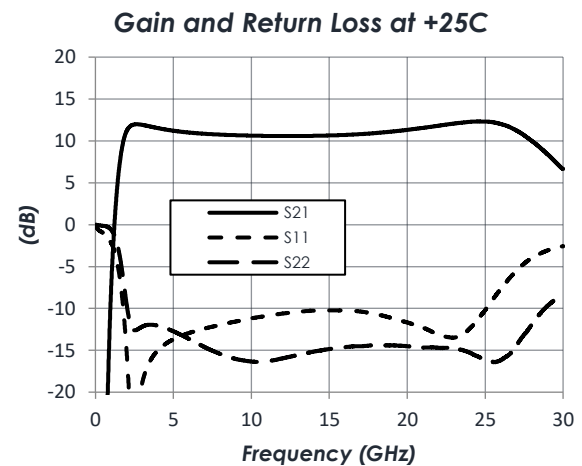
FEATURES

- 11 dB Gain
- 2.1 dB Noise Figure
- +22 dBm OIP3
- +12 dBm P1dB
- +3.3V / 29mA Operation
- -40C to +85C Operation
- 1.34mm x 0.94mm Bare Die

FUNCTIONAL DIAGRAM



CHARACTERISTIC PERFORMANCE



CONTENTS

FEATURES 1

FUNCTIONAL DIAGRAM 1

CHARACTERISTIC PERFORMANCE 1

REVISION HISTORY..... 2

PIN LAYOUT AND DEFINITIONS 3

SPECIFICATIONS..... 4

TYPICAL PERFORMANCE 5

TYPICAL APPLICATION..... 6

DIE DIMENSIONS 7

PART ORDERING DETAILS 7

RECOMMENDED WIRE BONDS..... 8

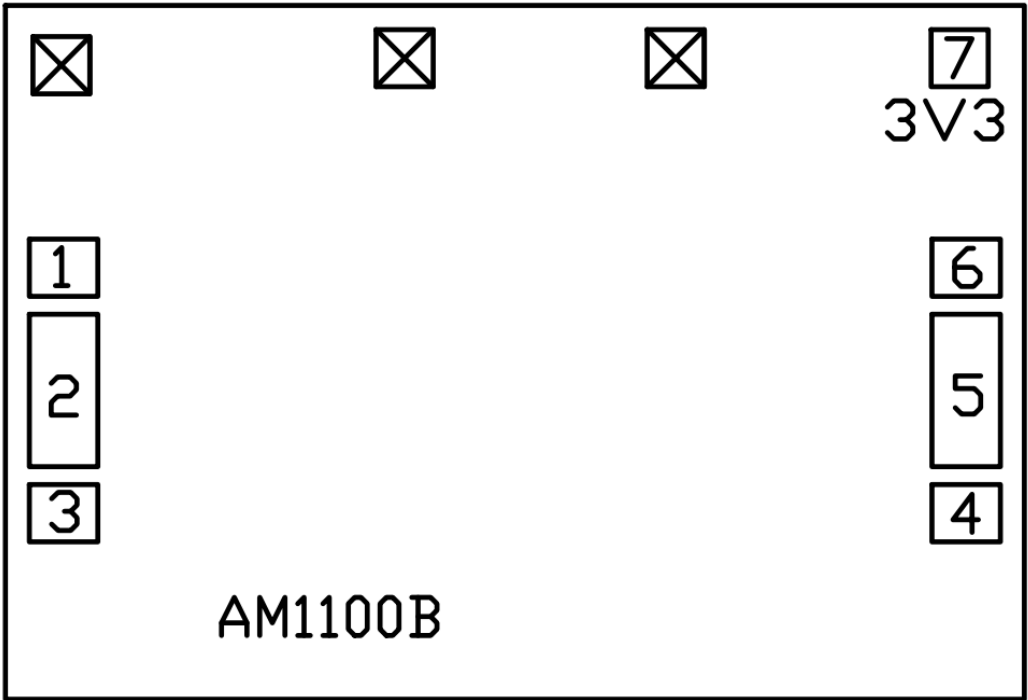
RELATED PARTS..... 8

COMPONENT COMPLIANCE INFORMATION 9

REVISION HISTORY

Date	Revision	Notes
April 4, 2022	1	Initial Release
September 30, 2024	2	Updated Plots

PIN LAYOUT AND DEFINITIONS



Pin	Name	Function
1	GND	Ground – Common
2	RF In	RF Input – 50 Ohms – AC Coupled
3, 4	GND	Ground – Common
5	RF Out	RF Output – 50 Ohms – AC Coupled
6	GND	Ground – Common
7	VDD	3.3V DC Power Input

SPECIFICATIONS

Absolute Maximum Ratings

	Minimum	Maximum
Supply Voltage	-0.3 V	+3.6 V
RF Input Power		+10 dBm
Storage Temperature Range	-55 C	+150 C

Note: Any device operation beyond the Absolute Maximum Ratings may result in permanent damage to the device. The values listed in this table are extremes and do not imply functional operation of the device at these or any other conditions beyond what is listed under Recommended Operating Conditions. Any part subjected to conditions outside of what is recommended for an extended amount of time may suffer from reliability concerns.

Handling Information

	Minimum	Maximum
ESD Sensitivity – Human Body Model (HBM)	Class 0A	



Mercury products are electrostatic sensitive.
Follow safe handling practices to avoid damage.

Recommended Operating Conditions

	Minimum	Typical	Maximum
Supply Voltage		+3.3 V	
Operating Case Temperature	-40 C		+85 C

Thermal Information

Thermal Resistance (channel to backside ground)	650 C/W
Nominal Junction Temperature at +85C Ambient	150 C
Channel Temperature to Maintain 1 Million Hour MTTF	175 C

DC Electrical Characteristics

(T = 25 °C unless otherwise specified)

Param	Testing Conditions	Min	Typical	Max
DC Supply Voltage			+3.3 V	
DC Supply Current	VDD = +3.3 V	23 mA	29 mA	34 mA
Power Dissipated	VDD = +3.3 V		96 mW	

RF Performance

(T = 25 °C unless otherwise specified)

Param	Testing Conditions	Min	Typical	Max
Frequency Range		2 GHz		26.5 GHz
Insertion Loss	f = 2 GHz		11.2 dB	
	f = 14 GHz		10.6 dB	
	f = 26.5 GHz		11.7 dB	
Return Loss	f = 2 GHz		-10 dB	
	f = 14 GHz		-10 dB	
	f = 26.5 GHz		-7 dB	
Output IP3	f = 14 GHz		22.4 dBm	
Output P1dB	f = 14 GHz		12.1 dBm	
Noise Figure	f = 14 GHz		2.1 dB	

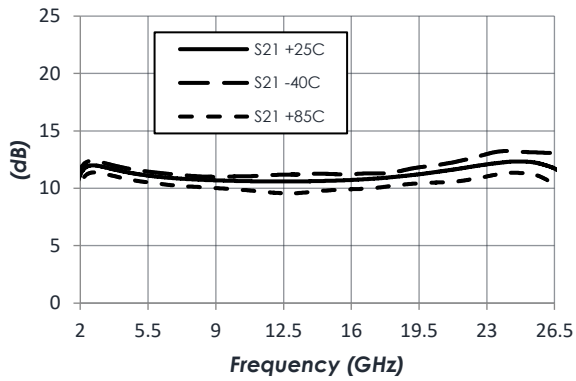
Notes:

1. OIP3 measured with -11dBm input power tones at 10MHz tone spacing.

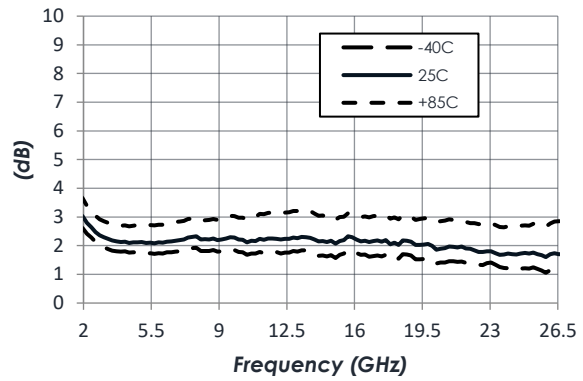
TYPICAL PERFORMANCE

(VDD = +3.3V, T = 25 °C unless otherwise specified)

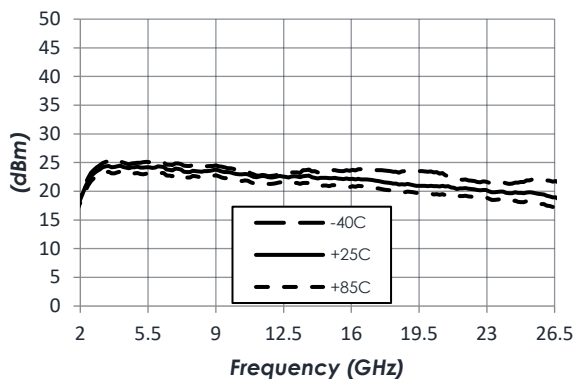
Gain vs Temperature



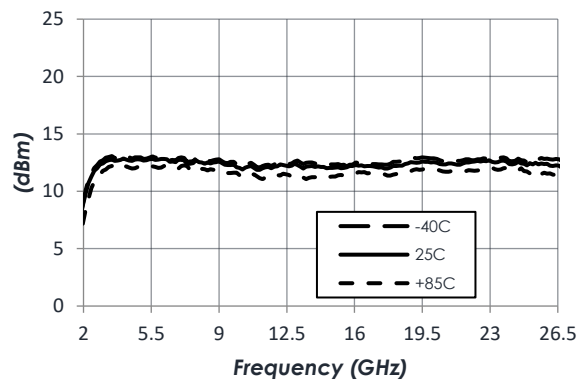
Noise Figure vs Temperature



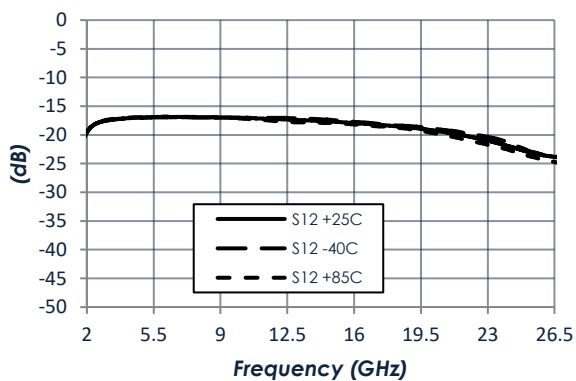
Output IP3 vs Temperature



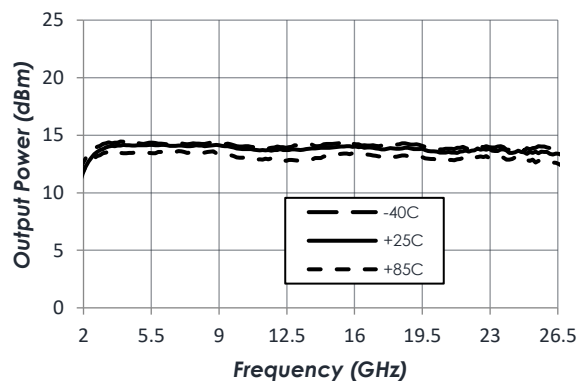
P1dB vs Temperature



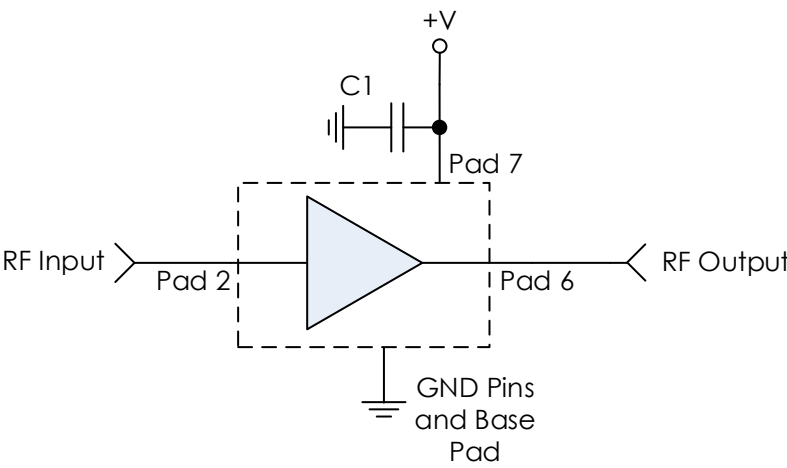
Reverse Isolation vs Temperature



P_Sat vs Temperature



TYPICAL APPLICATION



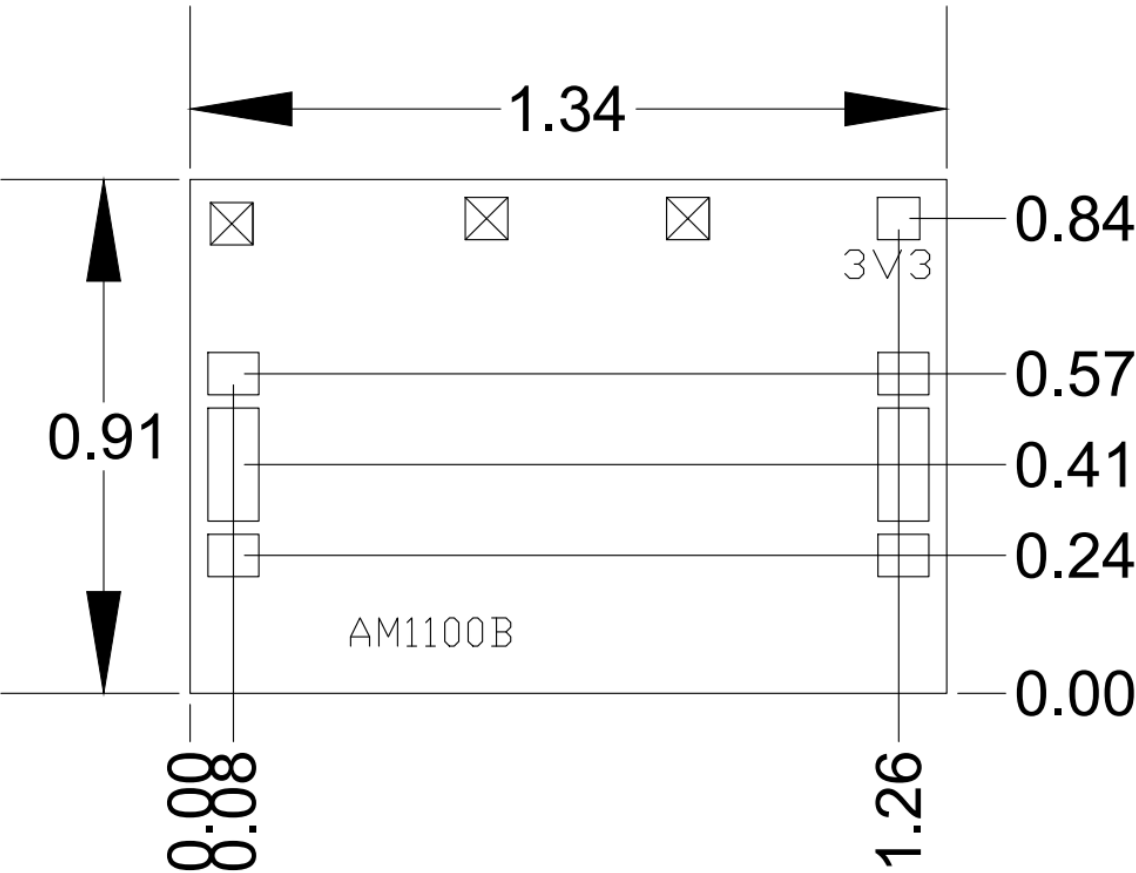
RECOMMENDED COMPONENT LIST (OR EQUIVALENT)

Part	Value	Part Number	Manufacturer
C1	100 pF	SKT01A101Z10A6	Tecdia

Notes:

- 1. AM1100-D is AC coupled. No external DC blocking capacitors are required.

DIE DIMENSIONS

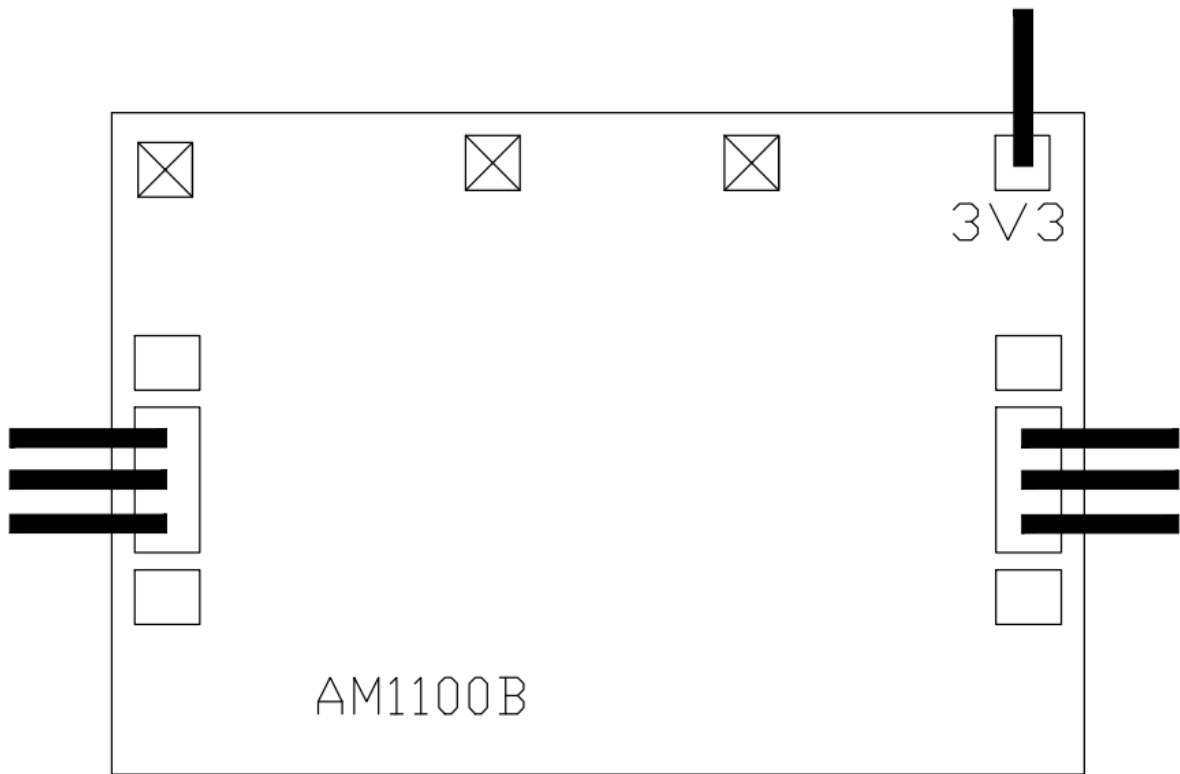


Note: Units in mm.

PART ORDERING DETAILS

Description	Part Number
1.34mm x 0.91mm Bare Die	AM1100-D
3mm 12 Lead QFN	AM1100
AM1100 3mm QFN Evaluation Board	AM1100 Eval

RECOMMENDED WIRE BONDS



Notes:

- 1. RF pads should have three bonds.
- 2. All bonds should be minimum length, minimum loop height, and evenly spaced for optimum performance.
- 3. Bonds should be 1 mil, gold.

RELATED PARTS

Part Number		Manufacturer
AM1101	2 GHz to 26.5 GHz	Bypassable Amplifier
AM1102	20 MHz to 22 GHz	Low Noise Amplifier
AM1111	2 GHz to 18 GHz	Driver Amplifier
AM1147	6 GHz to 26.5 GHz	Gain Equalizing Amplifier

COMPONENT COMPLIANCE INFORMATION

RoHS: Mercury Systems, Inc. hereby certifies that all products comply with the EC Directive 2011/65/EC on the Restriction of Hazardous Substances, commonly known as EU-RoHS 6 and 10. All products supplied by Mercury shall be compliant with the European Directive 2011/65/EC based on the following substance list.

Substance List	Allowable Maximum Concentration
Lead (Pb)	<1000 PPM (0.1% by weight)
Mercury (Hg)	<1000 PPM (0.1% by weight)
Cadmium (Cd)	<75 PPM (0.0075% by weight)
Hexavalent Chromium (CrVI)	<1000 PPM (0.1% by weight)
Polybrominated Biphenyls (PBB)	<1000 PPM (0.1% by weight)
Polybrominated Diphenyl ethers (PBDE)	<1000 PPM (0.1% by weight)
Decabromodiphenyl Deca BDE	<1000 PPM (0.1% by weight)
Bis (2-ethylhexyl) Phthalate (DEHP)	<1000 PPM (0.1% by weight)
Butyl Benzyl Phthalate (BBP)	<1000 PPM (0.1% by weight)
Dibutyl Phthalate (DBP)	<1000 PPM (0.1% by weight)
Diisobutyl Phthalate (DIBP)	<1000 PPM (0.1% by weight)

REACH: Mercury Systems, Inc. neither uses nor intentionally adds any of the substances considered to be a Substance of Very High Concern (SVHC) as defined by the EU Regulation (EC) No. 1907-2006 on Registration, Evaluation, Authorization, and Restriction of Chemicals (REACH).

Conflict Materials: Mercury does not knowingly use materials that are sourced from the Democratic Republic of Congo (DRC) or any other known conflict regions. Mercury's supply chain is comprised of sources that are both environmentally and socially responsible. We periodically review this requirement with our vendors to ensure continued compliance.

Mercury takes its responsibility as a global partner seriously and will use due diligence within our supply chain to ensure all standards are met to the best of our knowledge.



Corporate Headquarters

50 Minuteman Road
Andover, MA 01810 USA
+1 978.967.1401 tel
+1 866.627.6951 tel
+1 978.256.3599 fax

International Headquarters

Mercury International
Avenue Eugène-Lance, 38
PO Box 584
CH-1212 Grand-Lancy 1
Geneva, Switzerland
+41 22 884 5100 tel

Learn more

Visit: [mrcy.com](https://www.mrcy.com)

For pricing details, contact: MMICsales@mrcy.com

For technical details, contact: MMICsupport@mrcy.com



The Mercury Systems logo is a registered trademark of Mercury Systems, Inc. Other marks used herein may be trademarks or registered trademarks of their respective holders. Mercury products identified in this document conform with the specifications and standards described herein. Conformance to any such standards is based solely on Mercury's internal processes and methods. The information contained in this document is subject to change at any time without notice.

