

# High-Power CW Amplifier

## DM-HPX-100-105



Specifications are subject to change without notice

### Electrical Specifications (+25°C)

Parameter	Value
Frequency	9.75 to 10.25 GHz
Small Signal Gain	50 dB min
Gain Var. OverTemp	-0.06 dB/°C typical
Psat @ 5dBm Input	49.5 dBm min
Psat @ 5dBm Input	100 W typical
Noise Figure	8 dB max
DC Power	28 VDC, 17 A nom at Psat
PAE	30 % typical
VSWR (Input/Output)	2.0:1/1.5:1 nom
Harmonics	-20 dBc typical @ Psat
Spurious	-70 dBc typical
Input Power Handling	15 dBm max
Mismatch Handling	5.0:1 max
Operation	CW

### Mechanical Specifications

Parameter	Value
Size (L x W x H)	7.38 x 4.3 x 1.65 inches
Connectors (In/Out)	SMA (f)/TNC
Sealing	Epoxy
Finish	Ni finish
Marking	Black per MIL-STD-130
Cooling	External heatsink

### Features

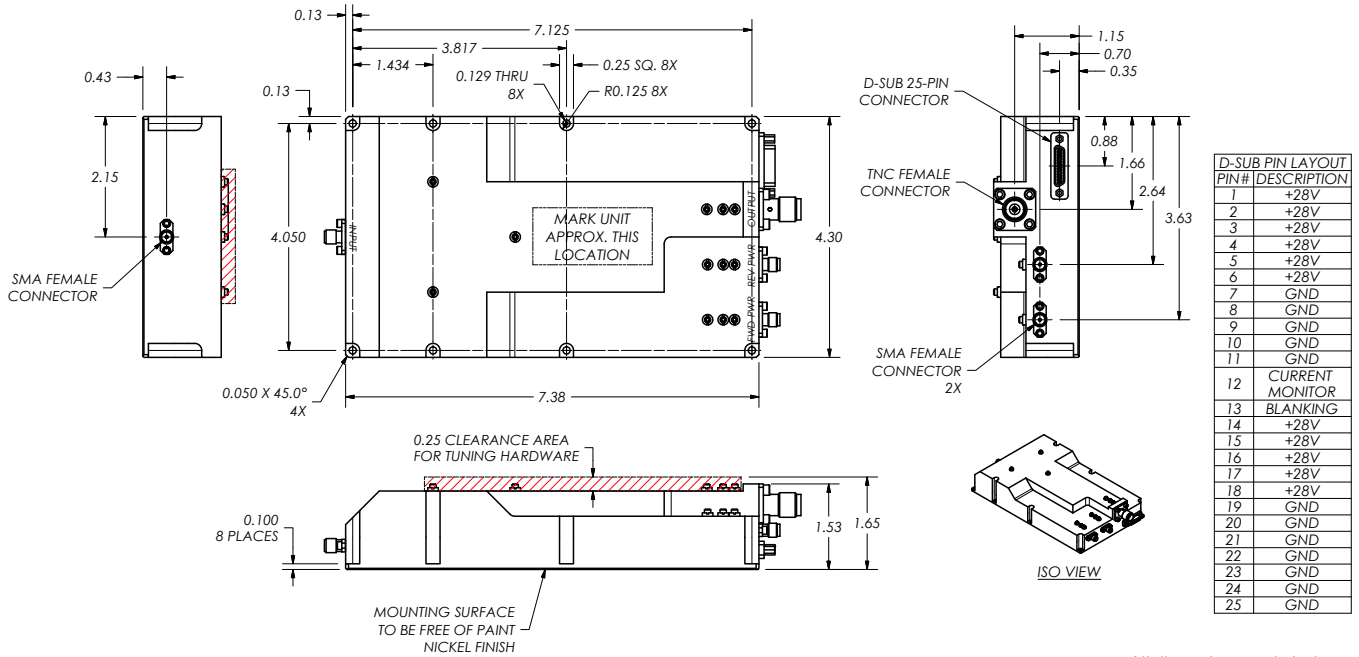
Parameter	Value
DC On/Off	1µs; TTL Logic-Low "0V": ON; High "5V": OFF
OverTemp Shutdown	at +70°C
Current Monitoring	Included

### Environmental Specifications (by design)

Parameter	Value
Operating Temperature	-20 to +60°C
Storage Temperature	-54 to +85°C
Relative Humidity	up to 90%
Altitude	up to 10,000 ft
Vibration	Lab equipment
Shock	N/A
Salt Fog	N/A
Fungus	N/A



Outline Drawing



All dimensions are in inches

Need More Help? Need a Variant of This Product?

Contact Mercury's RF & Microwave engineering team at [rf.microwave@rcy.com](mailto:rf.microwave@rcy.com) or visit [www.rcy.com/rf](http://www.rcy.com/rf) for a detailed listing of RF and Microwave products.



Corporate Headquarters

50 Minuteman Road • Andover, MA 01810 USA • (978) 967-1401 • (866) 627-6951 • Fax (978) 256-3599 • [www.rcy.com](http://www.rcy.com)