

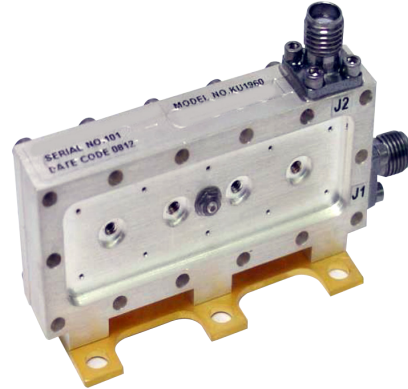
Space Qualified Bandpass Filter Ku1960



Specifications are subject to change without notice

Specifications (+25°C)

Parameter	Value
Passband	17300 to 17700 MHz
Insertion Loss	1.0 dB Maximum
Insertion Loss Flatness	0.25 dB Maximum
VSWR	1.3:1 Maximum
Rejection	40 dB at 17800 MHz
Connectors	3.5 mm Female
Package Size	0.5" x 1.0" x 2.3"
Weight	3.1 oz., 0.2 lb



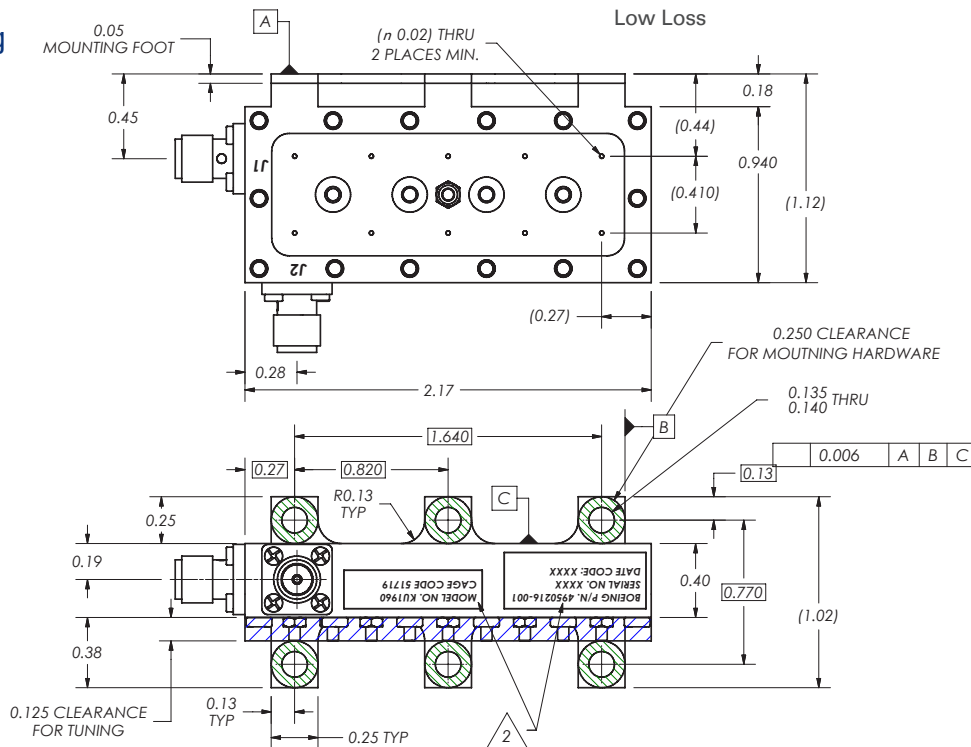
Features

- Cavity Design
- Static Notch
- Ultra Linear Amplitude
- Low Loss

Applications

- Communications Satellite
- Test Equipment

Outline Drawing



All dimensions are in inches

Need More Help? Need a Variant of This Product?

Contact Mercury's RF & Microwave engineering team at rf.microwave@mrcy.com or visit www.mrcy.com/rf for a detailed listing of RF and Microwave products.



Corporate Headquarters • 50 Minuteman Road • Andover, MA 01810 USA • (978) 967-1401 • (866) 627-6951 • Fax (978) 256-3599 • www.mrcy.com