

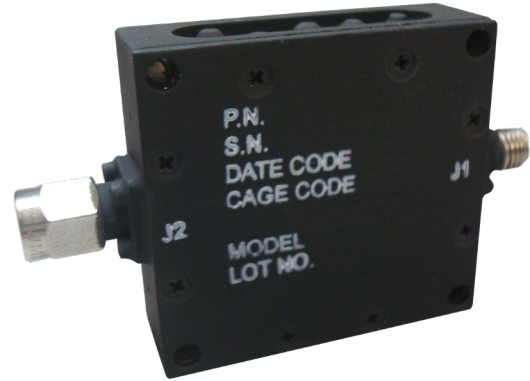
Space Qualified GPS Bandpass Filter L1355



Specifications are subject to change without notice

Specifications

Parameter	Value
Passband	1575.42 MHz
Insertion Loss	0.25 dBa Max @ 1575.42 +/- 10MHz
Ripple	0.1 dBc @ 1575.42 +/- 3MHz
3 dB Bandwidth	1575.42 +/- 20MHz
Rejection	-30 dBc @ 1200MHz
Rejection	-60 dBc @ 2100 MHz
Connectors	Input: SMA Female Output: SMA Male
Operating Temperatures	-40°C to + 125°C
Storage Temperatures	-55°C to +150°C
Package Size	0.6 x 1.5 x 1.6"



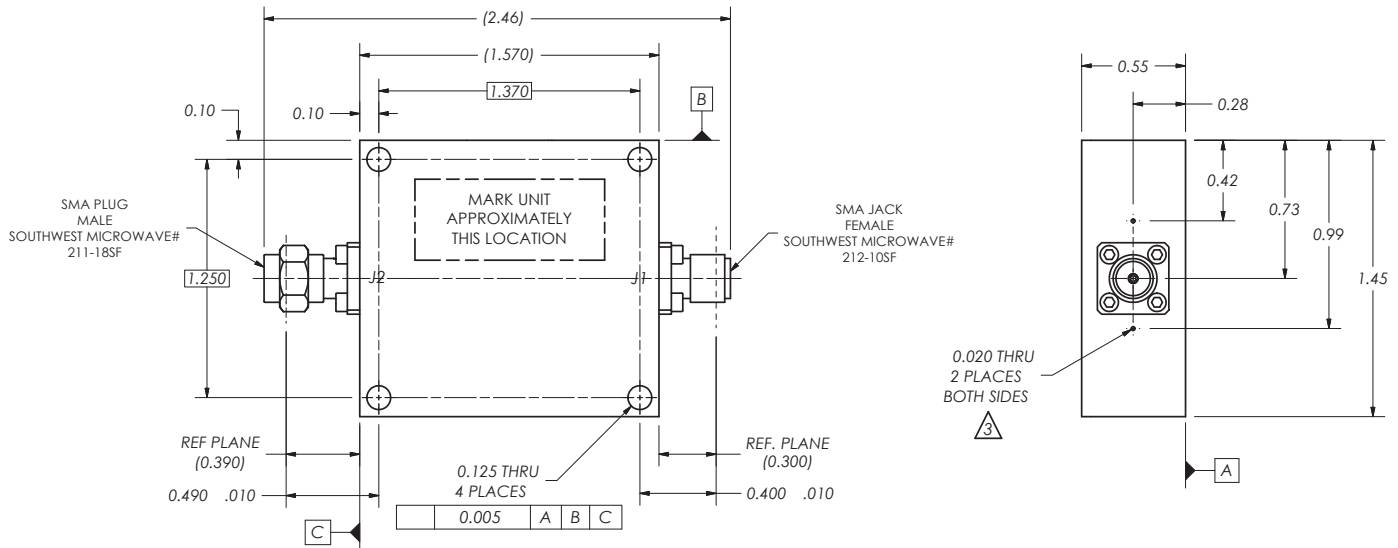
Features

- Ultra Low Insertion Loss
- Cavity Design
- Space Qualified

Applications

- Spacecraft
- Booster

Outline Drawing



All dimensions are in inches

Need More Help? Need a Variant of This Product?

Contact Mercury's RF & Microwave engineering team at rf.microwave@rcy.com or visit www.rcy.com/rf for a detailed listing of RF and Microwave products.



Corporate Headquarters • 50 Minuteman Road • Andover, MA 01810 USA • (978) 967-1401 • (866) 627-6951 • Fax (978) 256-3599 • www.rcy.com

6932.00E-0718-SS-L1355-SQ-filter