

GPS Filter Amplifier L54113



Specifications are subject to change without notice

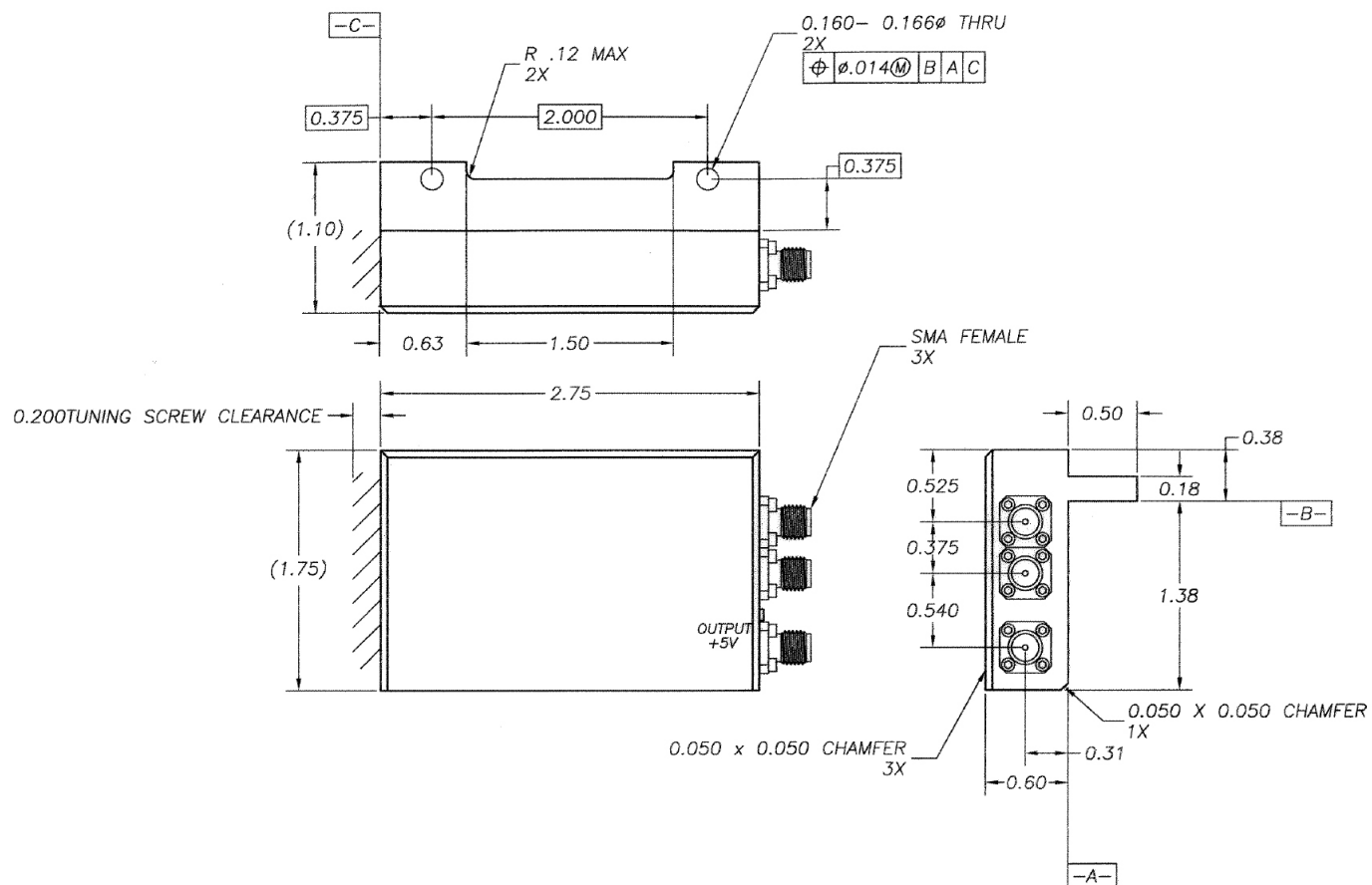
Electrical Specifications (+25°C)

Parameter	Value
Center Frequency	1575.4 + 10 MHz
Center Frequency Gain (1)	21 Min, 29 Max
Passband Ripple	< ±0.5 dB
Noise Figure	< 5.8 @ Ambient
Delta TD Fo ±8 MHz	< 8 ns p-p
1dB Compression Point	> +4 dBm (+1 dBm min. per port)
1 dB Bandwidth	±13 MHz Min
3 dB Bandwidth	±17 MHz Min to ±33 MHz Max
20 dB Bandwidth	±50 MHz Max
40 dB Two-sided Bandwidth	±135 MHz Max
Isolation from input to output	20 dB
Ultimate Rejection	>48 dBc min for all frequencies between 1 to 3 GHz that are greater than + 150 MHz from L1. >45 dB min from 3 GHz to 18 GHz. > 15 from 18 to 40 GHz.
Signal Band Noise Figure	2.5 dB Max 3.0 dB Max over Operating Temperature
VSWR (In & Out)	1.6:1 Max referenced to 50 Ohms

Parameter	Value
Splitter ports matching	
Amplitude	< ±0.5 dB
Phase	< ±5degrees
Noise Figure	< ±0.3 dB
DC Power	Through center conductor of output coaxial connector
Voltage	+5 ±0.5 VDC
Current Draw	0.050 Amps Max
In-Band Power Handling Operating	-15 dBm Max
In-Band Power Handling Survive	0.3 Watt CW Max (24.8dBm)
Out-Of Band Power Handling	10 Watts Peak, 10µs, 1% duty cycle Max
RF Output power	+12 dBm Max
Continuous Operating Temp	-40° to +80 OC
Non Operating Temperature	-62° to + 0 OC
Connectors	SMA Female per MIL-C-39012
Finish	Haze Gray per MIL-P-24441, Type 1



Outline Drawing



All dimensions are in inches

Need More Help? Need a Variant of This Product?

Contact Mercury's RF & Microwave engineering team at rf.microwave@mrcy.com or visit www.mrcy.com/rf for a detailed listing of RF and Microwave products.

Corporate Headquarters

50 Minuteman Road • Andover, MA 01810 USA • (978) 967-1401 • (866) 627-6951 • Fax (978) 256-3599 • www.mrcy.com