

# GPS Filter Amplifier L5878



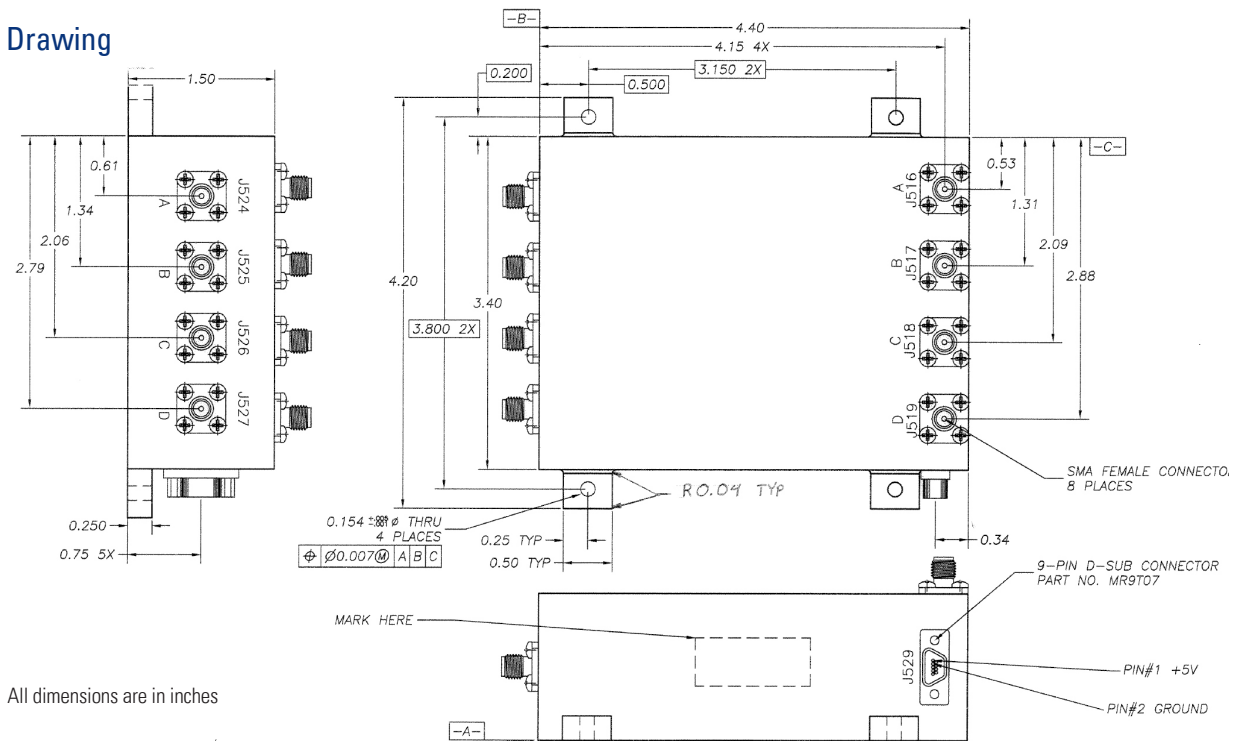
Specifications are subject to change without notice

## Electrical Specifications (+25°C)

Parameter	Value
Passband	L1 1575.42 +/- 10 MHz
Gain	10 to 14 dB
Noise Figure	< 2.7 dB @ +25C < 3.2 dB @ +80C
VSWR	1.5:1 Input 1.7:1 Output
1 dB output compression	+5 dBm minimum +10 dBm maximum
Channel to Channel Matching	< 0.3 dB amplitude over passband < 0.8 ns time delay over passband

Parameter	Value
3 dB bandwidth	+/- 17 to +/- 25 MHz
40 dB Bandwidth	+/- 100 MHz
75 dB Bandwidth	+/- 150 MHz
Ultimate attenuation	75 dB to 5.5 GHz 63 dB from 5.5 to 28 GHz 45 dB from 18 to 40 GHz
Power Handling	1149 Watts Peak (Inband non-operate) 11.5 Watts Avg (Inband non-operate) 7500 Watts Peak (out-of-band)
Connectors	SMA Female

## Outline Drawing



## Need More Help? Need a Variant of This Product?

Contact Mercury's RF & Microwave engineering team at [rf.microwave@rcy.com](mailto:rf.microwave@rcy.com) or visit [www.rcy.com/rf](http://www.rcy.com/rf) for a detailed listing of RF and Microwave products.



Corporate Headquarters • 50 Minuteman Road • Andover, MA 01810 USA • (978) 967-1401 • (866) 627-6951 • Fax (978) 256-3599 • [www.rcy.com](http://www.rcy.com)