

GPS Filter Amplifier L5988

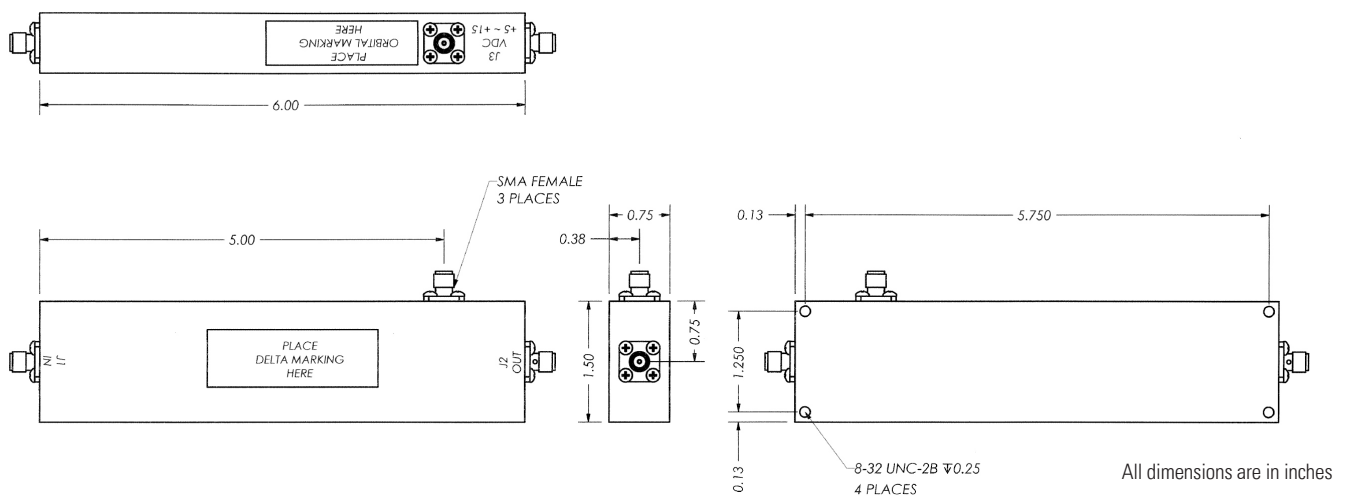


Specifications are subject to change without notice

Electrical Specifications (+25°C)

Parameter	Value
Passband	1565.42 – 1585.42 MHz
Gain	12 ± 2 dB (over Passband)
Noise Figure	3.0 dB maximum
VSWR (Input and Output)	1.8:1 maximum
IP3	+ 15 dB minimum
Output Power	+ 5 dBm minimum
20 dB Bandwidth	± 27 MHz maximum 40 dB
Bandwidth	± 30 MHz maximum
70 dB Bandwidth	± 50 MHz maximum
Ultimate Rejection	70 dBc
Voltage	+5 to +15 VDC
Current Draw	100 mA Maximum
Connectors	SMA Female

Outline Drawing



Need More Help? Need a Variant of This Product?

Contact Mercury's RF & Microwave engineering team at rf.microwave@rcy.com or visit www.rcy.com/rf for a detailed listing of RF and Microwave products.



Corporate Headquarters • 50 Minuteman Road • Andover, MA 01810 USA • (978) 967-1401 • (866) 627-6951 • Fax (978) 256-3599 • www.rcy.com

6771.00E-0718-SS-L5988-filter