

Medium Power, Broadband Amplifier AML0126P3002



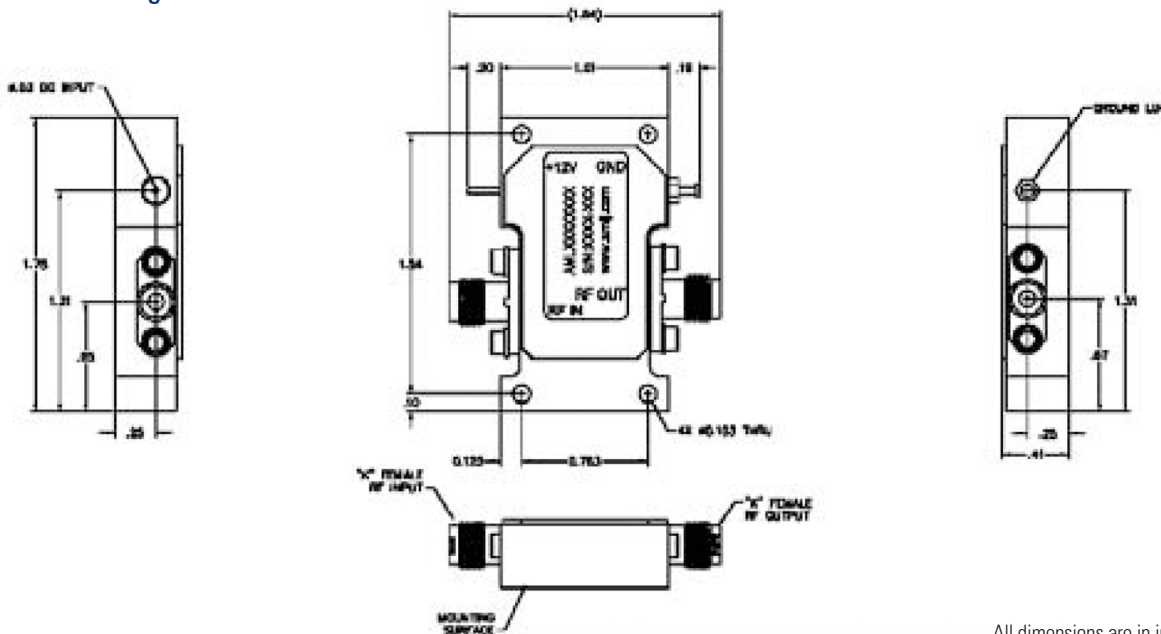
Specifications are subject to change without notice

Electrical Specifications (+25°C)

| Parameter | Value |
|-----------------------|-------------------------------|
| Frequency Range (GHz) | 0.1 - 26.5 |
| Gain (dB min) | 30 |
| Flatness (± dB max) | 3 |
| Noise Figure (dB max) | 6.0 |
| P-1dB (dBm min) | 2-18:26; 18-24:24; 24-26.5:22 |
| Output IP3 (dBm typ.) | 30 |
| VSWR In/Out (nom) | 2.0:1 |
| DC Current (mA nom) | 600 |

*Noise figure specified above 500MHz

Outline Drawing



All dimensions are in inches

Need More Help? Need a Variant of This Product?

Contact Mercury's RF & Microwave engineering team at rf.microwave@mrcy.com or visit www.mrcy.com/rf for a detailed listing of RF and Microwave products.



Corporate Headquarters • 50 Minuteman Road • Andover, MA 01810 USA • (978) 967-1401 • (866) 627-6951 • Fax (978) 256-3599 • www.mrcy.com