

# Space Qualified Bandpass Filter E1911



Specifications are subject to change without notice

## Specifications (+25°C)

Parameter	Value
Passband	19700 to 20200 MHz
Insertion Loss at Ambient	2.0 dB Maximum
Insertion Loss Variation Over Temperature	0.4 dB Maximum
Flatness Over 500 MHz	0.4 dB Maximum
Flatness Variation Over Temperature	0.1 dB Maximum
Gain Slope	0.015 dB/MHz Maximum
Group Delay Variation Over any 500 MHz	1.5 ns Maximum
Return Loss	20 dB Minimum
Rejection	15 dB below 19600 MHz 35 dB below 19500 MHz 50 dB at 30000 MHz
Connectors	SMA / SMP
Operating Temperature	-15° to +76° C
Package Size	0.51" x 0.966" x 1.5"
Weight	0.54 oz., 0.03 lb.



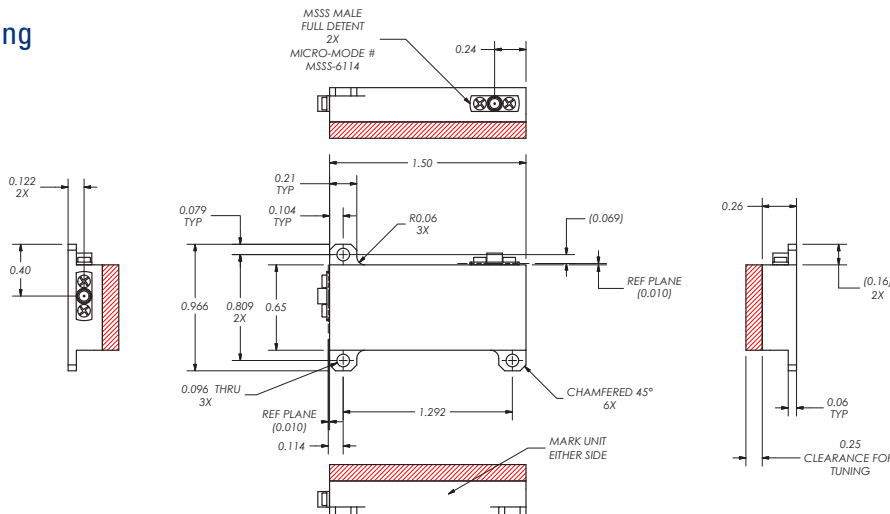
### Features

- Cavity design
- Low loss

### Applications

- Communications
- Test Equipment

## Outline Drawing



All dimensions are in inches

## Need More Help? Need a Variant of This Product?

Contact Mercury's RF & Microwave engineering team at [rf.microwave@mrcy.com](mailto:rf.microwave@mrcy.com) or visit [www.mrcy.com/rf](http://www.mrcy.com/rf) for a detailed listing of RF and Microwave products.



Corporate Headquarters • 50 Minuteman Road • Andover, MA 01810 USA • (978) 967-1401 • (866) 627-6951 • Fax (978) 256-3599 • [www.mrcy.com](http://www.mrcy.com)