

Diplexer / Amplifier

Ku5924



Specifications are subject to change without notice

Electrical Specifications (+25°C)

Parameter	Value
	TX Channel
Passband	14530 to 14930 MHz
Insertion Loss	1.9 dB Maximum at 14730 MHz 2.2 dB Maximum
VSWR	1.5:1
Rejection	100 dB from 1000 to 8500 MHz 120 dB from 8500 to 11700 MHz 100 dB from 11700 to 14350 MHz 100 dB from 15100 to 15150 MHz 110 dB from 15150 to 18000 MHz 35 dB from 18000 to 35000 MHz
Channel to Channel Isolation	110 dB Minimum
RF Power Handling	80 Watts
Connectors	Precision SMA Female Per MIL-C-39012
Weight	12.54 oz., 0.78 lb.
Package Size	1.5" x 1.7" x 6.2"

Parameter	Value
	RX Channel
Passband	15150 to 15350 MHz
Gain	28 to 34 dB
VSWR	1.7:1 Maximum
Rejection	110 dB from 1000 to 14930 MHz 60 dB from 14930 to 15000 MHz 60 dB from 15500 to 15550 MHz 100 dB from 15550 to 18000 MHz 5 dB from 18000 to 35000 MHz
Channel to Channel Isolation	110 dB Minimum
Noise Figure	3.4 dB Maximum over the passband
1dB Compression Point	+18dBm Minimum
Operational Signal Level	-22 dBm Maximum
Input Power	15VDC +/-5%, 200mA Maximum through external terminals
Connectors Precision	SMA Female Per MIL-C-39012

Environmental Specifications

Parameter	Value
Operating Temperature	-40 to +85 °C
Non-Operating Temperature	-55 to +85 °C
Humidity	Per Mil-STD-810F, Method 5074
Operating Altitude	15,000 feet maximum
Non-Operating Altitude	40,000 feet maximum
Operating Vibration	10 to 2000Hz, 19.45grams, 30 min./axis
Shock	6 blows in each of the three orthogonal axes, half sine, 15Gs, 11ms pulse

Features

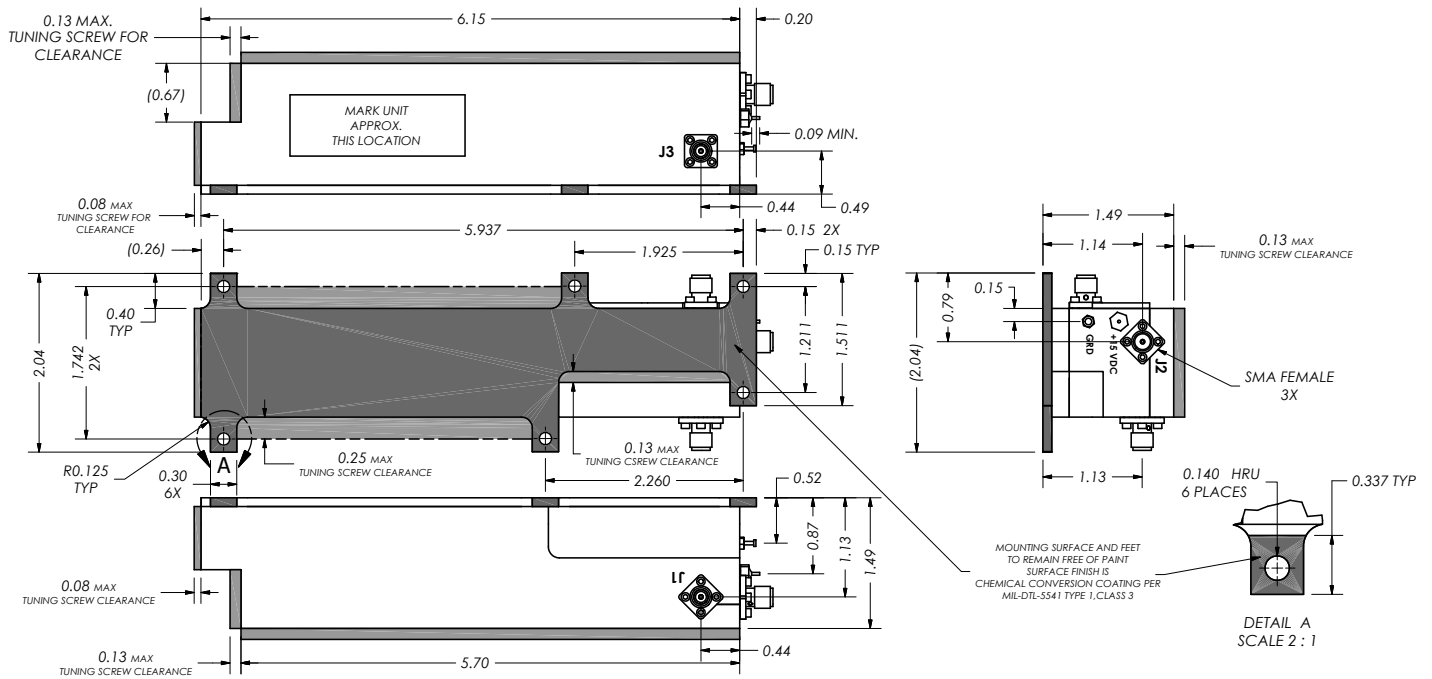
Diplexer with LNA Integrated into RX Channel
Compact Size
Light Weight

Applications

Tactical Common Data Link (TCDL)



Outline Drawing



All dimensions are in inches

Need More Help? Need a Variant of This Product?

Contact Mercury's RF & Microwave engineering team at rf.microwave@rcy.com or visit www.rcy.com/rf for a detailed listing of RF and Microwave products.



Corporate Headquarters

50 Minuteman Road • Andover, MA 01810 USA • (978) 967-1401 • (866) 627-6951 • Fax (978) 256-3599 • www.rcy.com