

GPS Filter Amplifier L5667



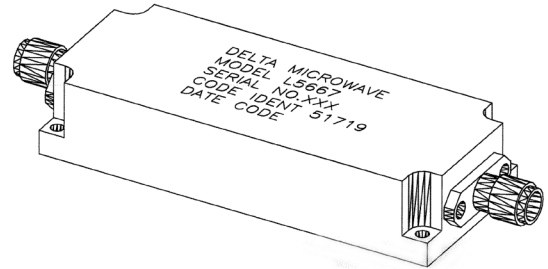
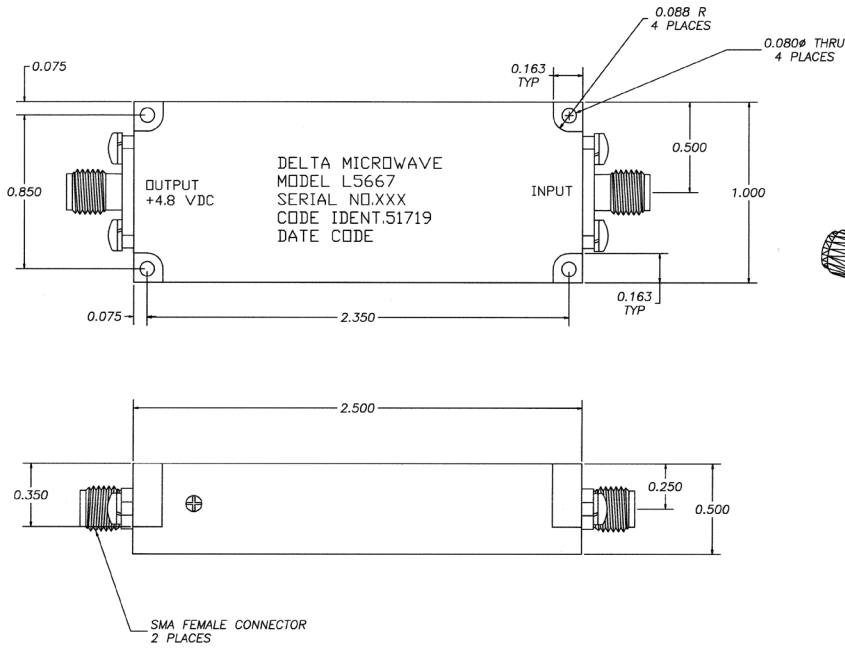
Specifications are subject to change without notice

Electrical Specifications (+25°C)

Parameter	Value
Center Frequency	1575.4 ±8 MHz
50 dB Bandwidth	340 MHz Max
1 dB input Compression Point	+ 10 dBm
Gain	25 ±3 dB
Noise Figure	3.0 dB over temp, 2.7 @ ambient
VSWR	1.5:1
Voltage	+4.7 to +5.0 regulated
Current	0.060 Amps
DC Bias	Thru RF Output Connector
Finish	Haze Grey
RF Connectors	SMAF
Operating Temperature	-50 to +70°C
Storage Temperature	-62 to +95 °C
Shock	MIL-STD-810, Test Method 516.2, Procedure I Amplitude @ 20 g and time 11 ms
Operational Vibration	0.15g/Hz, 200 to 1000 Hz, -6 dB/octave below 200, above 1 KHz, 14.3g RMS total, 1 hour
Operating Altitude	-500 to +25,000 Meters
Humidity	100% Condensing



Outline Drawing



All dimensions are in inches

Need More Help? Need a Variant of This Product?

Contact Mercury's RF & Microwave engineering team at rf.microwave@rcy.com or visit www.rcy.com/rf for a detailed listing of RF and Microwave products.



Corporate Headquarters

50 Minuteman Road • Andover, MA 01810 USA • (978) 967-1401 • (866) 627-6951 • Fax (978) 256-3599 • www.rcy.com