

GPS Filter/Amplifier L5697



Specifications are subject to change without notice

Electrical Specifications (+25°C)

Parameter	Value
Center Frequency	1575.4 +/- 10 MHz 1227.6 +/- 10 MHz
Gain	34 ±1 dB
Noise Figure	3.0 dB (Center at + 25C) 3.5 (Center at +71C)
VSWR	1.5:1
Time Delay	< 50 nS
Time Delay Matching	34 +/- 10 nS over the passband
80 dB Bandwidth	200 MHz Max
RF Power Handling	+10 dBm
Voltage	+9 to +25 VDC
Current	0.075 Amps
Finish	Haze Grey
RF Connectors	SMAF
DC Connector	D-Sub 9-pin
Operating Temperature	-54 to +71°C
Storage Temperature	-62 to +95 °C
Humidity	100% Condensing
Package Size	0.5 x 3.0 x 3.0"

Features

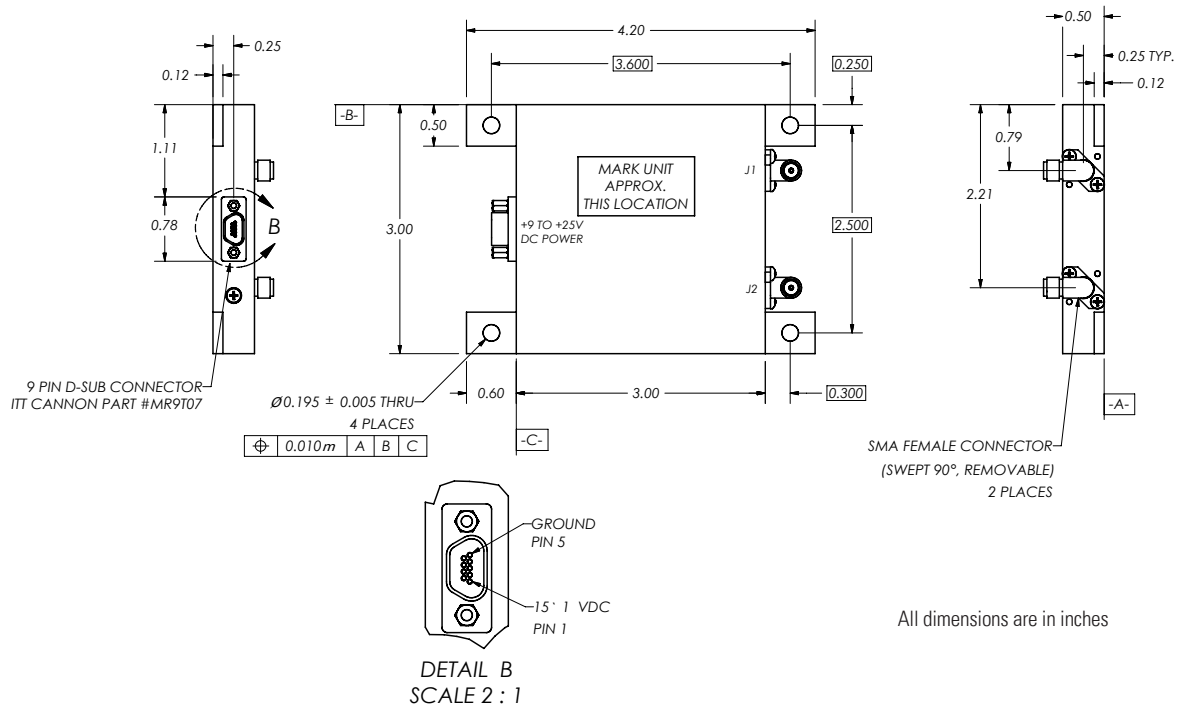
Cavity Design
Low Loss

Applications

Maritime
Airborne
Mobile
Timing
Test Equipment



Outline Drawing



Need More Help? Need a Variant of This Product?
 Contact Mercury's RF & Microwave engineering team at rf.microwave@rcy.com or visit www.rcy.com/rf for a detailed listing of RF and Microwave products.



Corporate Headquarters

50 Minuteman Road • Andover, MA 01810 USA • (978) 967-1401 • (866) 627-6951 • Fax (978) 256-3599 • www.rcy.com