

High Reliability 3 dB 90° Hybrid Coupler X6111



Specifications are subject to change without notice

Electrical Specifications (+25°C)

Parameter	Value
Passband	8200 to 8400 MHz
Insertion Loss	3.5 dB Maximum
VSWR	1.2:1 Maximum
Isolation	20 dB Minimum
Amplitude Balance	0.5 dB Peak-to-Peak
Phase Balance	90° ± 5°
Power Handling	+45 dBm in Vacuum
Connectors	SMA Female per MIL-C-39012
Weight	1.62 oz., 0.10 lb.
Package Size	0.47" x 1.0" x 2.9"

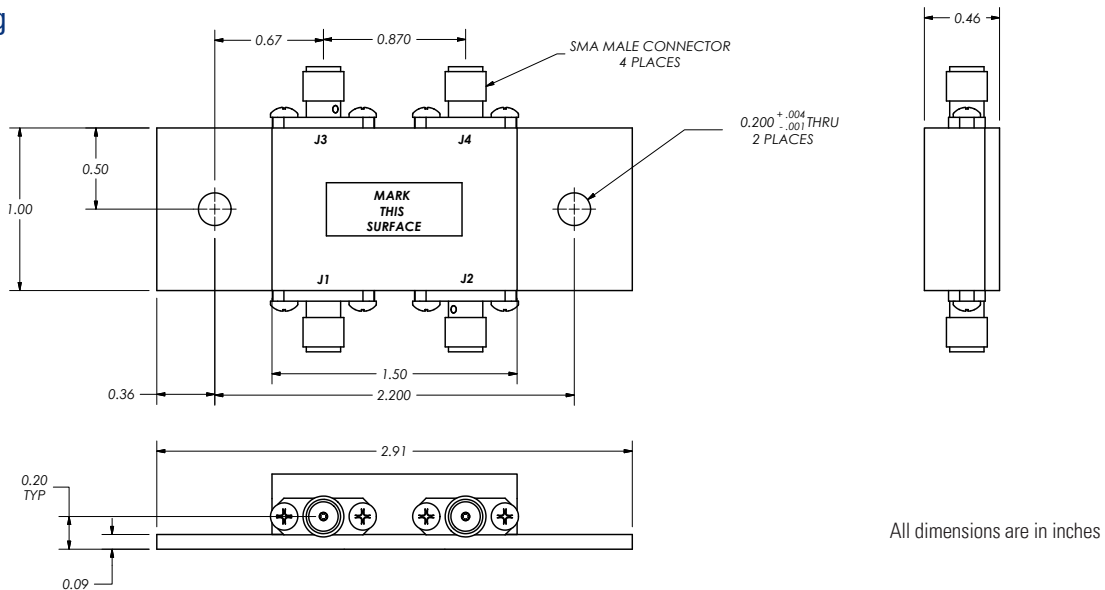
Features

- Stripline Design
- Low Loss
- Space Qualified

Applications

- Booster / Space
- Test Equipment

Outline Drawing



All dimensions are in inches

Need More Help? Need a Variant of This Product?

Contact Mercury's RF & Microwave engineering team at rf.microwave@mrcy.com or visit www.mrcy.com/rf for a detailed listing of RF and Microwave products.



Corporate Headquarters • 50 Minuteman Road • Andover, MA 01810 USA • (978) 967-1401 • (866) 627-6951 • Fax (978) 256-3599 • www.mrcy.com